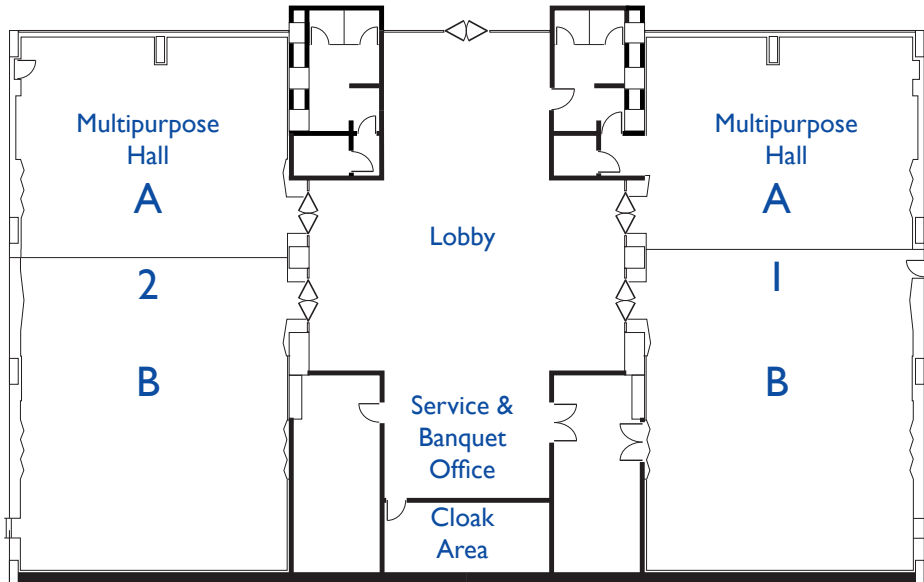


Ballroom



Capacity, number of people

Size in meters

| NAME | SIZE SQM | LENGH | WIDTH | HEIGHT FRONT | HEIGHT BACK |
|--------------------------|----------|-------|-------|--------------|-------------|
| 1 Al Jaddah East | 289,8 | 24,15 | 12 | 3,8 | 4,3 |
| 1A Al Jaddah East Zone A | 119,4 | 9,95 | 12 | 3,8 | |
| 1B Al Jaddah East Zone B | 170,4 | 14,2 | 12 | 3,8 | |
| 2 Al Jaddah West | 289,8 | 24,15 | 12 | F 3,8 | 4,3 |
| 2A Al Jaddah West Zone A | 119,4 | 9,95 | 12 | 3,8 | |
| 2B Al Jaddah West Zone B | 170,4 | 14,2 | 12 | 3,8 | |