

PERFECT

MEETINGS AND EVENTS

CREATIVE
SOLUTIONS FOR
IMPECCABLE EVENTS

parkplaza.com


Park Plaza
Hotels & Resorts

INDEX

PRIVATE EVENTS	4
CORPORATE SOCIAL RESPONSIBILITY	6
RESTAURANTS & BARS	8
FREE WI-FI	10
CLUB CARLSON	11
art’otel	12
THE BEST ONLINE RATE — GUARANTEED	13

CROATIA		
Park Plaza Histria Pula	Pula	18
Park Plaza Verudela Pula	Pula	20
Park Plaza Medulin	Medulin	21

GERMANY		
Park Plaza Prenzlauer Berg Berlin	Berlin	24
Park Plaza Wallstreet Berlin Mitte	Berlin	26
Park Plaza Trier	Trier	28

THE NETHERLANDS		
Park Plaza Victoria Amsterdam	Amsterdam	32
Park Plaza Vondelpark, Amsterdam	Amsterdam	34
Park Plaza Amsterdam Airport	Amsterdam	36
Park Plaza Eindhoven	Eindhoven	38
Park Plaza Utrecht	Utrecht	40

UNITED KINGDOM		
Park Plaza Cardiff	Cardiff	44
Park Plaza Leeds	Leeds	46
Park Plaza County Hall London	London	48
Park Plaza Riverbank London	London	50
Park Plaza Sherlock Holmes London	London	52
Park Plaza Victoria London	London	54
Park Plaza Westminster Bridge London	London	56
Park Plaza Nottingham	Nottingham	58
Plaza On The River	London	60

ISRAEL		
Park Plaza Orchid Tel Aviv	Tel Aviv	61

UNDER DEVELOPMENT	62
CONTACT	63



KEY FEATURES

- HEALTH / FITNESS CLUB
- SPA
- POOL
- BUSINESS CENTRE
- ON-SITE PARKING
- FREE WI-FI
- 100% NON-SMOKING
- ROOM SERVICE

WELCOME TO
PARK PLAZA®
HOTELS & RESORTS

At Park Plaza® Hotels & Resorts we specialise in delivering outstanding meetings and event facilities throughout our stylish collection of European hotels. Our flexible spaces are ideal for meetings, conferences, social gatherings and training sessions, and with a host of locations to choose from we guarantee you'll find the perfect solution. Our brilliant chefs design bespoke menus, we pour inspiration and creativity into our breakout sessions and our dedicated meeting planners take care of the finest of fine details.

That's why we're one of Europe's most respected meetings and events providers. Why not check out how we can help you ensure that your next event is the best one yet?

Take a 360° virtual tour and explore Park Plaza online:
parkplaza.com/virtualtours
parkplaza.com/watch-our-videos

OUR COMMITMENT

- WE'LL RESPOND TO YOUR ENQUIRY WITHIN ONE HOUR, AND WE'LL DELIVER OUR PROPOSAL WHEN YOU NEED IT.
- YOU'LL HAVE A DEDICATED MEETINGS SPECIALIST FOR YOUR EVENT.
- WE'LL OFFER ON-THE-SPOT SOLUTIONS ON THE DAY.
- WE'LL CREATE A PERSONALISED WEB PAGE FOR YOUR EVENT ON REQUEST.
- WE'LL DELIVER INSPIRATIONAL TEA AND COFFEE BREAKS.
- YOU'LL RECEIVE A CONCISE, ITEMISED INVOICE WITHIN THREE DAYS OF YOUR EVENT.

PRIVATE EVENTS

WHATEVER YOU'RE CELEBRATING, WE HAVE THE ULTIMATE VENUE. IF YOU'RE LOOKING FOR AN IDYLIC SETTING IN WHICH TO SAY 'I DO', TO MARK A LANDMARK BIRTHDAY OR TO TOAST A SPECIAL ANNIVERSARY, OUR HOTELS ACROSS EUROPE WILL MAKE IT A DAY TO REMEMBER.



LET'S
CELEBRATE

From romantic ceremonies to unforgettable wedding nights, Park Plaza® Hotels & Resorts invites you to make the ultimate commitment. Whether it's a fairytale wedding overlooking the River Thames or an intimate evening with close friends and family we can stage the day you've always dreamt about. Many of our hotels are licensed for weddings and civil ceremonies and offer breathtaking reception spaces as well as once-in-a-lifetime wedding nights in our Bridal and Honeymoon Suites.

If you're hosting an anniversary, birthday, bar mitzvah or retirement party, our contemporary spaces can be tailored to suit your guest list. Dine in our award-winning restaurants and bars or challenge our talented chefs to design a fitting menu especially for your event. Stay with us and enjoy our luxuriously contemporary guestrooms and suites before escaping to our tranquil spas and state-of-the-art fitness centres. However you envisage marking your special event, it's your party your way.

Learn more at
[parkplaza.com/weddings-and-anniversaries](https://www.parkplaza.com/weddings-and-anniversaries)



CORPORATE SOCIAL RESPONSIBILITY

AS A LOCAL PLAYER WITH GLOBAL REACH, WE'RE DEDICATED TO MINIMISING THE IMPACT OUR HOTELS HAVE ON THE ENVIRONMENT AND THE COMMUNITIES IN WHICH THEY OPERATE. OUR 'GREEN TEAMS' ARE TASKED WITH ROLLING OUT ENERGY-SAVING LIGHTING, REDUCING PACKAGING, INSTALLING WATER-SAVING DEVICES AND INTRODUCING OSMOSIS SYSTEMS IN KITCHENS.

Our Total Responsibility for Everyone's Environment (TREE) initiative is the central principle of our sustainable business strategy. Under TREE we guarantee that team members are motivated to reduce resource consumption and waste, support local communities and ensure that each of our 2,500 team members is working in an ethically fair environment with equal access to training and personal development.

THINK
GREEN



RESTAURANTS & BARS

OUR BUZZING CONTEMPORARY RESTAURANTS AND BARS OFFER DINING EXPERIENCES BEYOND COMPARE. AND WHEN IT COMES TO MEETINGS AND EVENTS, WE TAILOR ALL MENUS AND BREAKOUT SESSIONS TO YOUR SPECIFIC REQUIREMENTS. WHETHER IT'S COFFEE BREAKS WITH LIGHT BITES AND DRINKS, ENERGISING LUNCHES OR RELAXING AFTERNOON TEAS, WE GUARANTEE YOU FOOD FOR THOUGHT.



FOOD FOR THOUGHT

We're passionate about food. Throughout all our hotels, our talented chefs imbue every dish with unique flair and creativity. That's why our restaurants regularly receive the most coveted industry awards.

Our innovative Pan-Asian Chino Latino® Restaurant & Bar is adored by diners and critics, while the freshest ingredients dance on your palate at Brasserie Joël. Ichi Sushi and Sashimi Bar's just-caught fish and heavenly fragrant rice bring a touch of Tokyo to London, and TOZI's all-Italian wine list is the perfect accompaniment to its menu of delightful Venetian-inspired cicchetti. The settings are contemporary, the service is exemplary, but it's the food that takes centre stage.

From a vibrant city bar to an atmospheric alfresco terrace, our exceptional mixologists create dazzling cocktails to fit your mood. Add a dash of live entertainment and unlimited laughter and you have the ultimate venue.

Awards

TWO AA ROSETTES

Chino Latino® Restaurant & Bar
Park Plaza Riverbank London

ONE AA ROSETTE

Spectrum Restaurant & Bar
Park Plaza County Hall London
Sherlock's Grill
Park Plaza Sherlock Holmes London
JB's Restaurant
Park Plaza Victoria London
Laguna Kitchen & Bar
Park Plaza Cardiff



FREE WI-FI



WE UNDERSTAND THAT LIFE DOESN'T STAND STILL WHILE YOU'RE TRAVELLING. THAT'S WHY WE OFFER COMPLIMENTARY WIRELESS INTERNET IN OUR GUESTROOMS, PUBLIC AREAS AND MEETING SPACES AT ALL OUR HOTELS IN EUROPE. WHAT'S MORE, YOU DON'T EVEN NEED TO CHECK-IN TO ENJOY FREE WI-FI WITH US — SIMPLY POP IN TO THE LOBBY, RESTAURANT OR BAR AND GET ONLINE FOR FREE WHEN YOU PURCHASE A MEAL OR DRINK.

VISIT PARKPLAZA.COM/CONNECTFORFREE TO LEARN MORE.

STAY CONNECTED



Park Plaza Histria Pula

PLAN YOUR EVENTS PLAN ON REWARDS

Club CarlsonSM for Planners is a unique hotel rewards program exclusively for meeting and event planners. Join today to start earning Gold Points[®] when you book your events at more than 1,000 participating Carlson Rezidor hotels worldwide.



Small Event Base Points
Earn 3 Gold Points per USD spent on total qualifying event purchases up to USD 5,000.



Large Event Base Points
Earn 5 Gold Points per USD spent on total qualifying event purchases of more than USD 5,000.



Redemption Options
Enjoy valuable redemption options such as free Award Nights, airline miles, PayPal[™] deposits, and more.



Meetings Minus Carbon
Club Carlson now purchases carbon credits to offset the estimated carbon footprint of all of Club Carlson for Planners meetings and events globally. Visit clubcarlson.com/carbonfootprint for details.

Learn more at
clubcarlson.com/planners

You must be a member of Club Carlson[™] to participate in Club Carlson for Planners and participation is subject to the Club Carlson for Planners terms and conditions and privacy policy available at clubcarlson.com/planners. Benefits may vary by hotel and are subject to availability and change. Additional terms and restrictions apply, including all Club Carlson terms and conditions.
©2013 Carlson Hotels, Inc. All rights reserved.

The logo for art'otel, with 'art' in black and 'otel' in black, separated by a small pink square.

amsterdam
berlin
budapest
cologne
dresden

Broaden your horizons

With a seamless fusion of art and life, art'otel provides creative spaces for meetings and events in cosmopolitan centres across Europe. Add in world-class hospitality, outstanding cuisine and exceptional personal service and we guarantee your delegates will be inspired to greatness.

artotels.com

THE BEST ONLINE RATE —
GUARANTEED!

WE KNOW THAT, AS SAVVY TRAVELLERS, YOU'RE ALWAYS LOOKING FOR THE BEST DEAL. THAT'S WHY WE GUARANTEE THAT YOU CAN BOOK WITH CONFIDENCE AT PARKPLAZA.COM. IN FACT, WE'RE SO ADAMANT THAT YOU WON'T FIND A BETTER ONLINE RATE ANYWHERE ELSE THAT IF YOU DO WE'LL MATCH THE RATE YOU FIND AND WE'LL DISCOUNT IT BY 25%.

VISIT PARKPLAZA.COM/BESTRATE FOR MORE DETAILS.

A woman with dark hair in a ponytail, wearing a white sleeveless top, is sitting in a blue armchair and working on a laptop. A white mug is on the table next to her. The background is a bright, modern interior with large windows.

OUR GUARANTEE



MEET

EUROPE AND THE MIDDLE EAST

- Leeds
- Cardiff
- Nottingham
- London
- Eindhoven
- Trier
- Amsterdam
- Utrecht
- Berlin
- Pula
- Medulin
- Tel Aviv



CROATIA

CROATIA

Renowned for its mild climate and spectacular views, the Croatian coastline is bursting with hidden treasures, from Roman villas and temples to hundreds of tiny islands. And with the crystal-clear Adriatic Sea offering fishing, sailing to secluded coves, and wreck dives to ancient Roman galleys and first-world-war battleships, there is no better place to immerse yourself in a natural paradise.

Increasingly popular as a meetings and incentives destination, this Adriatic haven offers tranquillity and seclusion, allowing delegates to enjoy the best of both worlds – excellent facilities coupled with outstanding leisure opportunities. Romantic couples, meanwhile, will find no more enchanting setting for the wedding of their dreams.

Discover more of the magic of Croatia at parkplaza.com/croatia



PARK PLAZA HISTRIA PULA

AN IDYLIC EVENTS VENUE CLOSE TO THE ANCIENT CITY OF PULA BOASTING A CHOICE OF MEETING ROOMS AND A PURPOSE-BUILT HALL FOR LARGE CONFERENCES

With breathtaking views of the Adriatic, Park Plaza Histria Pula offers an enchanting setting for meetings, conferences and special events. The hotel's three meeting rooms can host up to 100 delegates, while 700 guests can be accommodated in the impressive Congress Hall.

- Four contemporary meeting rooms totalling 740m²
- On-site parking
- Overlooking the majestic Adriatic coastline just 13km from Pula Airport
- 368 contemporary guestrooms and suites
- Guestrooms have private furnished balconies with sea views
- Two restaurants and a choice of bars
- Two salt water pools, fitness centre, sauna and spa with massage menu
- Access to the aqua park, sports pitches and Kids' Club at the neighbouring Park Plaza Verudela Pula
- Explore the range of shops, boutiques, art galleries and dining venues at Verudela shopping avenue, which connects the newly renovated Park Plaza Histria Pula and Park Plaza Verudela Resort.



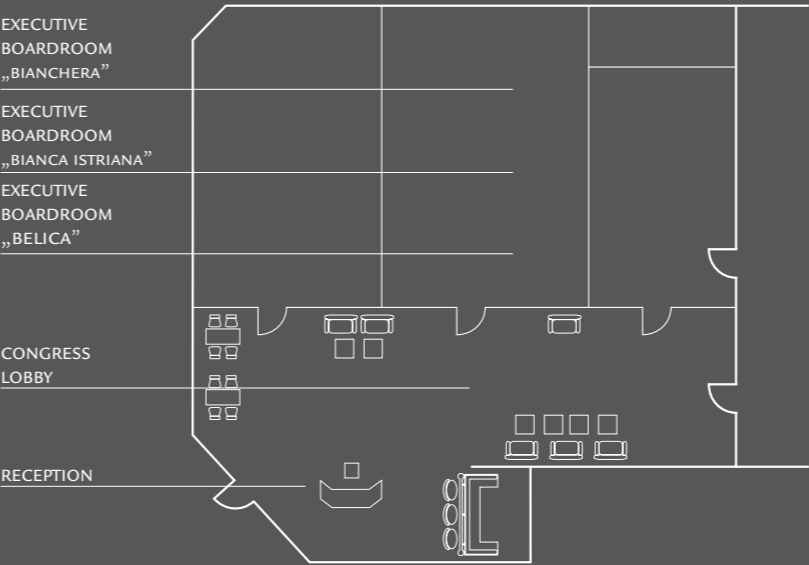
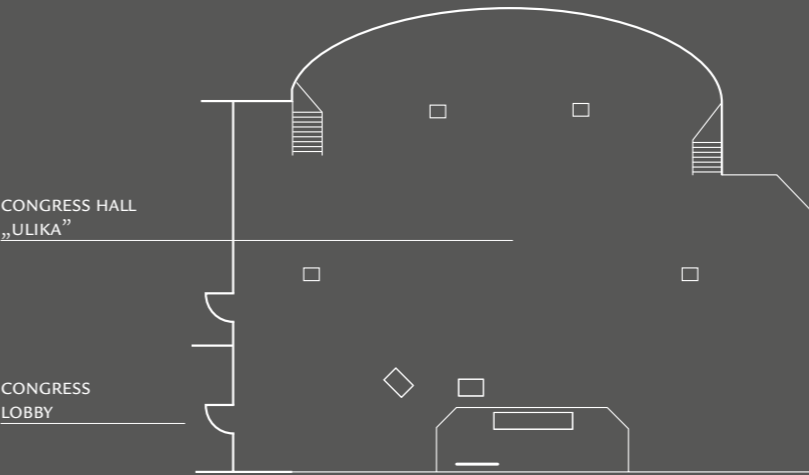
Verudella 17, Pula, HR-52100
T: +385 (0) 52 590 000 F: +385 (0) 52 214 175
meetingscroatia@pphe.com
parkplaza.com/histria

- | | | |
|----------------------------|-----------------------|-------------------------|
| 1 PARK PLAZA HISTRIA PULA | 6 RESORT SPLENDID | 11 ARCH OF THE SERGIANS |
| 2 PARK PLAZA VERUDELA PULA | 7 RESORT HORIZON | 12 FRESH FOOD MARKET |
| 3 HOTEL PARK | 8 HOTEL RIVIERA | 13 MARINAS |
| 4 HOTEL BRIONI | 9 AMPHITHEATRE | |
| 5 VERUDELA BEACH | 10 TEMPLE OF AUGUSTUS | |

ROOM NAME	DIMENSION W X L X H(M)	THEATRE	BOARD ROOM	U-SHAPE	CLASS ROOM	CABARET DINNER	DINNER DANCE	RECEPTION
CONGRESS HALL „ULIKA”	31.0 x 18.0 x 2.70 – 4.60	700	65	200	350	280	350	–
EXECUTIVE BOARDROOM „BIANCHERA”	7.0 x 10.0 x 3.6	–	24	–	–	–	–	–
EXECUTIVE BOARDROOM „BIANCA ISTRIANA”	8.0 x 10.0 x 3.6	80	36	30	40	35	40	–
EXECUTIVE BOARDROOM „BELICA”	4.0 x 7.0 x 3.6	35	22	20	30	–	–	–



FIRST FLOOR



PARK PLAZA VERUDELA PULA

A TASTEFULLY REFURBISHED BEACHSIDE RESORT
OVERLOOKING THE SPARKLING ADRIATIC SEA
WITH ACCESS TO FLEXIBLE MEETING SPACES AT
PARK PLAZA HISTRIA PULA.

Providing modern apartments with a kitchen and balcony or terrace, Park Plaza Verudela Pula stages meetings and events with its neighbour, Park Plaza Histria Pula. Also boasting a selection of restaurants and leisure facilities, this beachside resort is perfect for social gatherings.

- Self-catering apartments close to Park Plaza Histria Pula
- Beautifully landscaped gardens close to the beach
- On-site parking
- Near the ancient city of Pula and within easy reach of Pula Airport
- Three restaurants serving a selection of international cuisine
- Espressamente illy serving authentic Italian coffee, delicious sandwiches and much more
- Aqua park, three pools, sports pitches and Kids' Club




- | | | |
|----------------------------|-----------------------|-------------------------|
| 1 PARK PLAZA VERUDELA PULA | 6 RESORT SPLENDID | 11 ARCH OF THE SERGIANS |
| 2 PARK PLAZA HISTRIA PULA | 7 RESORT HORIZONT | 12 FRESH FOOD MARKET |
| 3 HOTEL PARK | 8 HOTEL RIVIERA | 13 MARINAS |
| 4 HOTEL BRIONI | 9 AMPHITHEATRE | |
| 5 VERUDELA BEACH | 10 TEMPLE OF AUGUSTUS | |


Verudella 11, Pula, HR-52100
T: +385 (0) 52 590 781 F: +385 (0) 52 222 798
meetingscroatia@pphe.com
parkplaza.com/verudela



- | | | |
|------------------------|-------------------------|-----------------|
| 1 PARK PLAZA MEDULIN | 6 CAMPING RESORT KAZELA | 11 BIJECA BEACH |
| 2 HOTEL HOLIDAY | 7 MARINA | |
| 3 VILLAGE MEDULIN CAMP | 8 MEDULIN CENTRE | |
| 4 APARTMENT AI PINI | 9 ST. AGNES CHURCH | |
| 5 HOTEL BELVEDERE | 10 VIŽULA | |


Osipovica 31, Medulin, HR-52203
T: +385 (0) 52 572 601 F: +385 (0) 52 576 017
meetingscroatia@pphe.com
parkplaza.com/medulin

PARK PLAZA MEDULIN

A BREATHTAKING MEETINGS AND CONFERENCE
SOLUTION CLOSE TO THE HISTORIC FISHING
TOWN OF MEDULIN AND THE GLORIOUS
MEDULIN RIVIERA

Gloriously located on the Adriatic coast, Park Plaza Medulin offers an idyllic setting for events for up to 130 delegates. With contemporary accommodation, lush gardens and a restaurant serving modern Istrian cuisine, this exceptional venue is perfect for meetings, conferences and parties.

- Two air-conditioned meeting rooms
- On-site parking
- Overlooking the majestic Adriatic coastline
- 178 contemporary guestrooms with satellite TV
- 12 Medulin Suites with living room, secluded balcony and sea view
- Tempting restaurant serving modern Istrian dishes
- Adults only hotel

GERMANY

As Germany's largest, most dynamic city, Berlin sets a frantic pace. Creativity is everywhere, with new buildings, innovative exhibitions and frenetic nightlife, yet there are also echoes of the city's past. Attractions such as the Brandenburg Gate and the Tiergarten adorn the Mitte district, along with the magnificent art museums of the Kulturforum and the impressive modern skyscrapers of the Potsdamer Platz.

Sitting among gentle hills, the city of Trier boasts the premier collection of Roman remains in Northern Europe. Yet the city is also contemporary and cosmopolitan, with extensive vineyards and a large student population often frequenting the Hauptmarkt which has served as Trier's marketplace since medieval times. With its proximity to Luxembourg and France Trier has a pleasantly relaxed feel, with historical sites such as the 11th-century St Peter's Cathedral, the Porta Nigra and the Kaiserthermen emphasising the city's elaborate history spanning 2,000 years.



GERMANY

PARK PLAZA PRENZLAUER BERG BERLIN

A STYLISH AND WELCOMING VENUE FOR MEETINGS, TRAINING EVENTS AND SEMINARS CLOSE TO BERLIN CITY CENTRE

Versatile spaces, natural daylight and a warm welcome make Park Plaza Prenzlauer Berg Berlin a perfect solution for meetings and events. Close to the Velodrom event centre and European swimming hall, the hotel offers contemporary accommodation and a modern restaurant and café.

- Three connecting event rooms totalling 131m² for up to 80 delegates
- Intimate business room for small-scale meetings
- Well-equipped Business corner
- Private on-site parking
- Direct transport connection to Berlin's railway station, exhibition halls and airports
- 155 elegant and fully air-conditioned guestrooms and suites
- Restaurant Fontane for hearty breakfasts
- MIX Restaurant & Bar for all-day dining, cocktails and coffees



Storkower Strasse 162, 10407 Berlin

T: +49 (0) 30 421 810 F: +49 (0) 30 421 811 11

pppbconf@pphe.com

parkplaza.com/prenzlauerberg

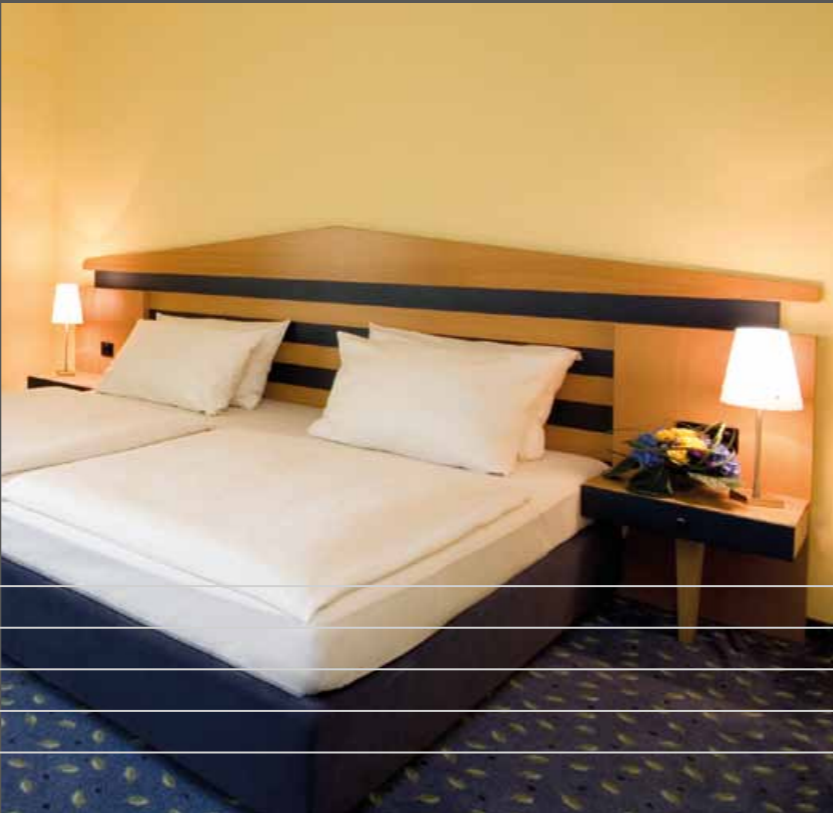


1 PARK PLAZA PRENZLAUER BERG BERLIN

2 VELODROM & SWIMMING HALL

3 FRIEDRICHSHAIN PARK & SEZ — SPORT & RECREATION CENTRE

ROOM NAME	DIMENSION W X L X H(M)	THEATRE	BOARD ROOM	U-SHAPE	CLASS ROOM	CABARET DINNER	BANQUET	RECEPTION
FIRST FLOOR								
ZWEIG	5.0 x 2.7 x 2.8	8	—	—	—	6	8	10
BRECHT	8.0 x 3.3 x 2.8	25	8	15	12	12	16	20
TUCHOLSKY	5.6 x 8.0 x 2.8	40	14	21	26	18	24	40
ZWEIG & BRECHT	12.2 x 3.3 x 2.8	30	8	15	18	18	16	25
BRECHT & TUCHOLSKY	10.6 x 8.0 x 2.8	80	24	32	55	48	48	70
ZWEIG, BRECHT & TUCHOLSKY	10.9 x 9.1 x 2.8	80	24	32	55	48	56	80
BUSINESS ROOM	5.0 x 3.0 x 2.5	8	4	—	—	6	6	—

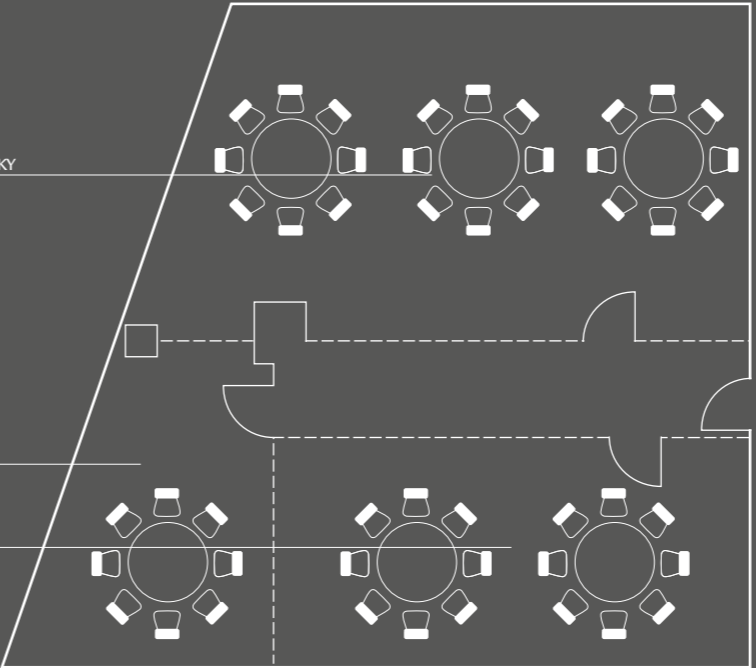


FIRST FLOOR

TUCHOLSKY

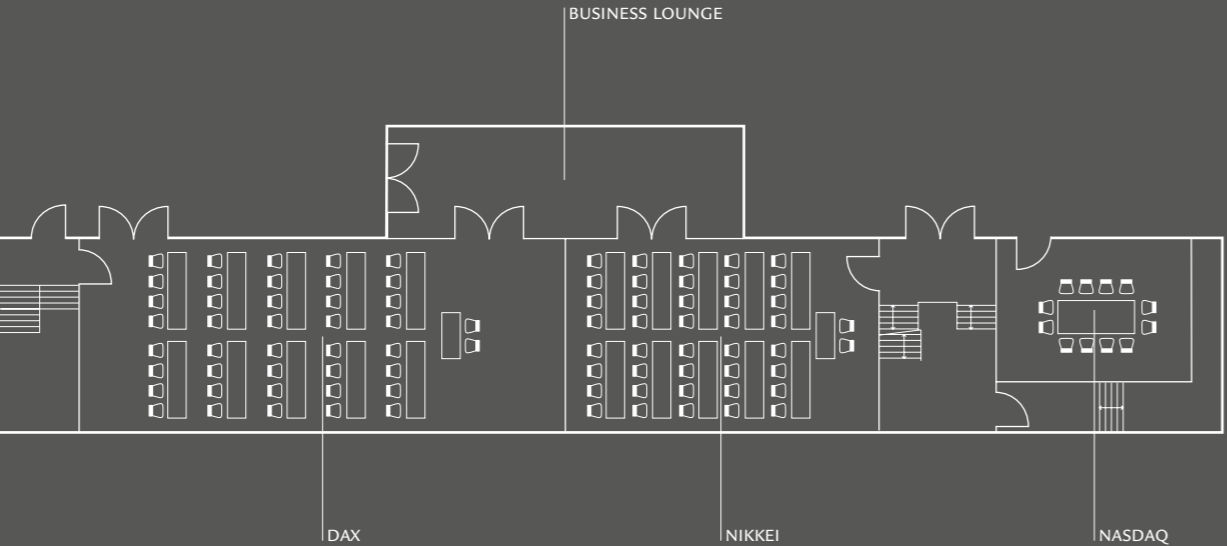
ZWEIG

BRECHT

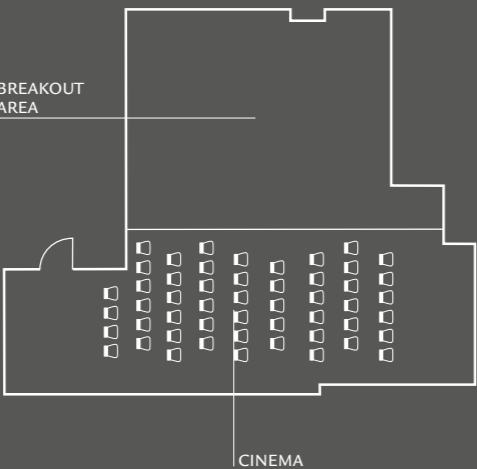




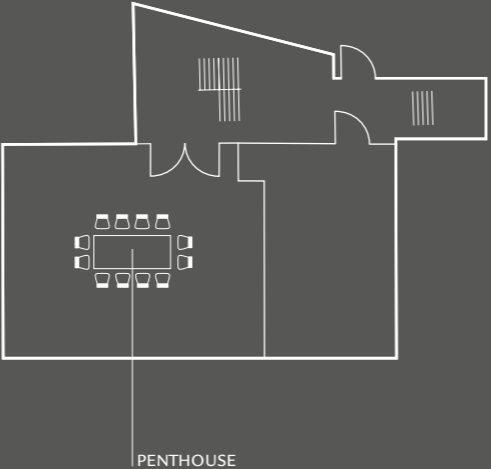
GROUND FLOOR



4TH FLOOR

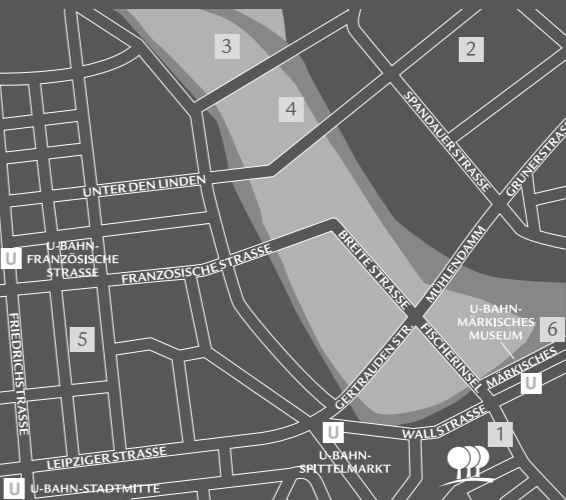


TOP FLOOR



These layouts are examples only and will be adapted according to your request

ROOM NAME	DIMENSION W X L X H (M)	THEATRE	BOARD ROOM	U-SHAPE	CLASS ROOM	CABARET DINNER	BAN- QUET	RECEP- TION
GROUND FLOOR								
NASDAQ	7.0 x 4.0 x 3.4	-	12	-	-	-	-	-
NIKKEI	12.0 x 5.0 x 3.4	40	30	30	30	-	24	40
DAX	18.0 x 5.0 x 3.4	70	40	28	28	-	40	70
NIKKEI & DAX	30.0 x 5.0 x 3.4	140	80	50	80	-	64	150
AUDITORIUM	15.0 x 5.0 x 3.2	50	-	-	-	-	-	80
3RD FLOOR								
SUITE 334	3.5 x 4.5 x 3.2	-	8	-	-	-	-	-
4TH FLOOR								
SUITE 434	3.5 x 4.5 x 3.2	-	8	-	-	-	-	-
TOP FLOOR								
PENTHOUSE	7.0 x 6.0 x 3.6	25	16	16	20	-	-	25



- 1

PARK PLAZA WALLSTREET
BERLIN MITTE
- 2

ALEXANDERPLATZ
- 3

MUSEUMSINSEL
- 4

BERLINER DOM
- 5

GENDARMENMARKT
- 6

art'otel berlin mitte

PARK PLAZA WALLSTREET BERLIN MITTE

A QUIRKY AND CONTEMPORARY MEETINGS
VENUE IN THE HEART OF BERLIN, WITH STATE-
OF-THE-ART AUDIOVISUAL TECHNOLOGY,
AIR-CONDITIONING AND NATURAL DAYLIGHT
THROUGHOUT.

Located near the Potsdamer Platz, Brandenburger Gate and Alexanderplatz, Park Plaza Wallstreet Berlin Mitte offers a choice of two function rooms combinable for up to 140 delegates, an exclusive cinema and five event rooms which are perfect for board meetings and private gatherings.

- Seven function rooms totalling 295m²
- Impressive penthouse conference room with panoramic Berlin views
- Two intimate suites for board meetings
- Private cinema for up to 50 guests
- Private on-site parking
- Close to key transport links in Berlin city centre
- 167 contemporary and fully equipped guestrooms and suites
- Restaurant “Light Lounge” and Bar “Rule 405”
- Modern fitness centre and sauna

Wallstrasse 23–24, 10179 Berlin

T: +49 (0) 30 847 117 0 F: +49 (0) 30 847 117 777

ppwbconf@pphe.com

parkplaza.com/wallstreet

26

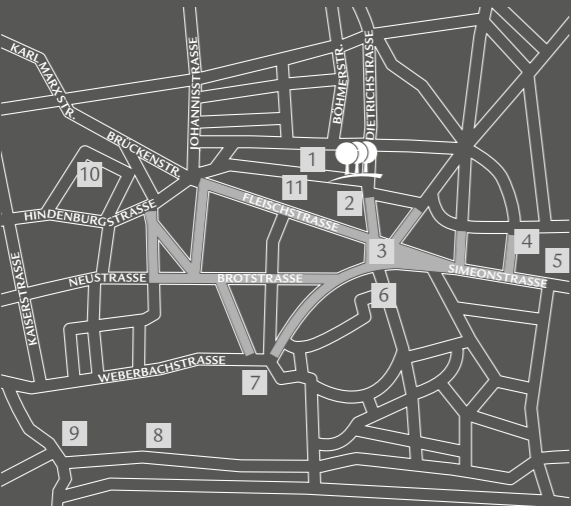
27

PARK PLAZA TRIER

EXTENSIVE MEETING AND PRIVATE CELEBRATING FACILITIES FOR UP TO 220 GUESTS IN THE CITY CENTRE JUST 30KM FROM LUXEMBOURG AIRPORT.

Located close to Porta Nigra in central Trier, Park Plaza Trier boasts eight conference rooms, each with natural daylight, for up to 220 delegates. All rooms are air-conditioned and feature state-of-the-art audio-visual technology, while the roof terrace is ideal for special occasions.

- Eight partially combinable meeting rooms totalling 700m²
- Roof terrace with unique views over Trier
- On-site underground car park
- Close to the main commercial district and famous Trierer Dom in Germany's oldest city
- 150 spacious guestrooms and suites
- CAESAR's Restaurant for regional and international cuisine
- Relaxing Lobby Bar for pre-dinner cocktails
- Roman health club with sauna, steam bath and massage



- 1 PARK PLAZA TRIER

2 FRANKENTURM

3 HAUPTMARKT

4 TOURIST OFFICE

5 PORTA NIGRA
- 6 DOM & LIEBFRAUENKIRCHE

7 KONSTANTIN BASILIKA

8 RHEINISCHES LANDESMUSEUM

9 KAISERTHERMEN

10 THEATRE
- 11 SHOPPING MALL "TRIER GALERIE"

PEDESTRIAN ZONE



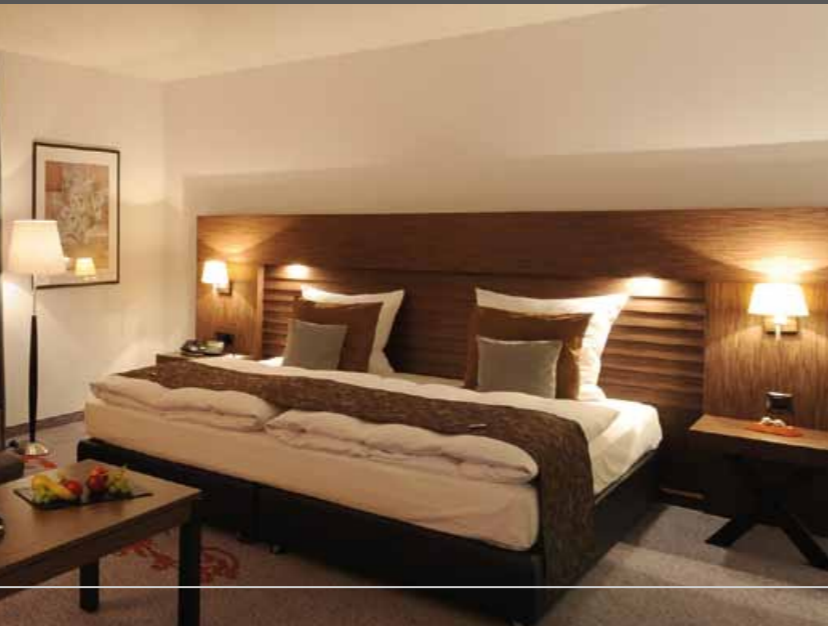
Nikolaus Koch Platz 1, Trier 54290

T: +49 (0) 651 9993 0 F: +49 (0) 651 9993 555

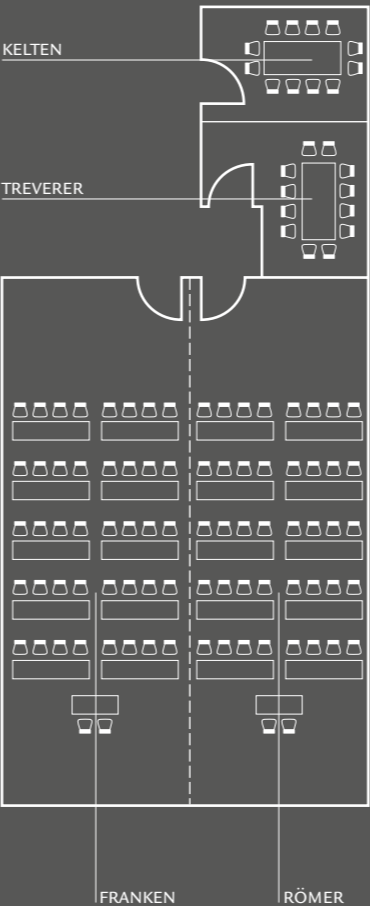
bankett@parkplaza-trier.de

parkplaza.com/trier

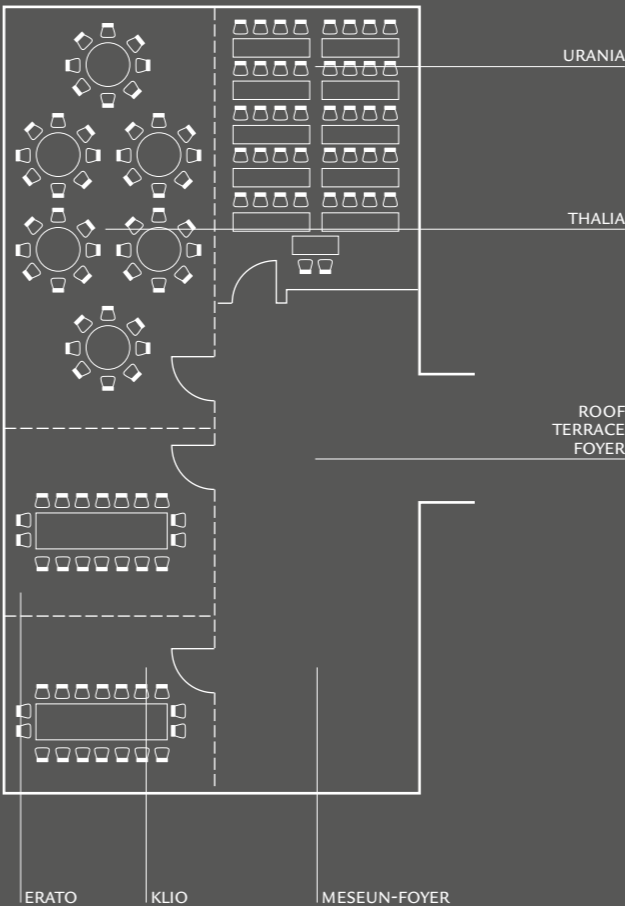
ROOM NAME	DIMENSION W X L X H(M)	THEATRE	BOARD ROOM	U-SHAPE	CLASS ROOM	CABARET DINNER ROOM	BANQUET	RECEPTION
WING A								
KELTEN	6.5 x 4.3 x 2.9	20	12	-	12	-	-	-
TREVERER	5.7 x 4.7 x 2.9	24	12	-	16	-	-	-
RÖMER	10.4 x 7.0 x 3.0	60	28	24	40	-	30	-
FRANKEN	11.0 x 6.7 x 3.0	60	28	24	40	-	30	-
RÖMER & FRANKEN	11.0 x 13.7 x 3.0	120	45	40	90	-	80	-
WING B								
KLIO	7.7 x 7.4 x 2.9	32	20	15	28	-	-	-
ERATO	7.9 x 6.2 x 2.9	32	20	15	28	-	-	-
URANIA	10.4 x 7.7 x 2.9	48	28	22	40	-	35	-
THALIA	11.3 x 7.9 x 2.9	80	36	30	68	-	50	-
KLIO & ERATO	15.6 x 7.4 x 2.9	64	36	30	56	-	50	-
KLIO, ERATO & THALIA	26.9 x 7.9 x 2.9	168	-	-	136	-	120	-
KLIO, ERATO, THALIA & URANIA	-	216	-	-	176	-	180	-
ERATO & THALIA	19.0 x 7.9 x 2.9	128	50	44	104	-	80	-
ERATO, THALIA & URANIA	-	160	-	-	136	-	130	-
THALIA & URANIA	-	128	-	-	108	-	100	-



WING A



WING B



These layouts are examples only and will be adapted according to your request

"I find the booking process very straight forward once I have sent over my enquiry they always come back to me if not straight away then within 24 hours
I find this one of the easiest properties to deal with and the staff are always very helpful and friendly which makes my life much easier!"
Angelina Fairgrieve, The Travel Company Edinburgh
Park Plaza Amsterdam Airport

THE NETHERLANDS

THE NETHERLANDS

Rich in cultural heritage, The Netherlands has been home to many of history's most famous names in the worlds of art, literature, philosophy and science. With magnificent 17th and 18th century merchants' houses flanking its world-famous canals, its capital Amsterdam boasts Europe's largest intact historical city centre. Its narrow streets house delightful shops, cafés and eateries, while a variety of fascinating museums and galleries showcase some of the world's finest art and culture.

Eindhoven, a respected industrial centre and technology hub, has the Philips brand coursing through its veins, while the Van Abbe Museum shows works by Picasso, Chagall, Kandinsky and Mondriaan. Utrecht, meanwhile, offers an unparalleled vitality. With a small medieval city centre, the city boasts world-class festivals, modern architecture, trendy shops and interesting museums alongside a choice of friendly alfresco cafés and restaurants.



PARK PLAZA VICTORIA AMSTERDAM

A CENTRAL AMSTERDAM MEETINGS VENUE
RENOWNED FOR OUTSTANDING FACILITIES AND
EXCEPTIONAL LEVELS OF SERVICE.

Only 20 minutes from Amsterdam Schiphol Airport and in the heart of the city centre, Park Plaza Victoria Amsterdam is ideal for meetings, events and celebrations. Renowned for friendly staff, the hotel can combine meeting rooms with syndicate suites to host up to 130 delegates.

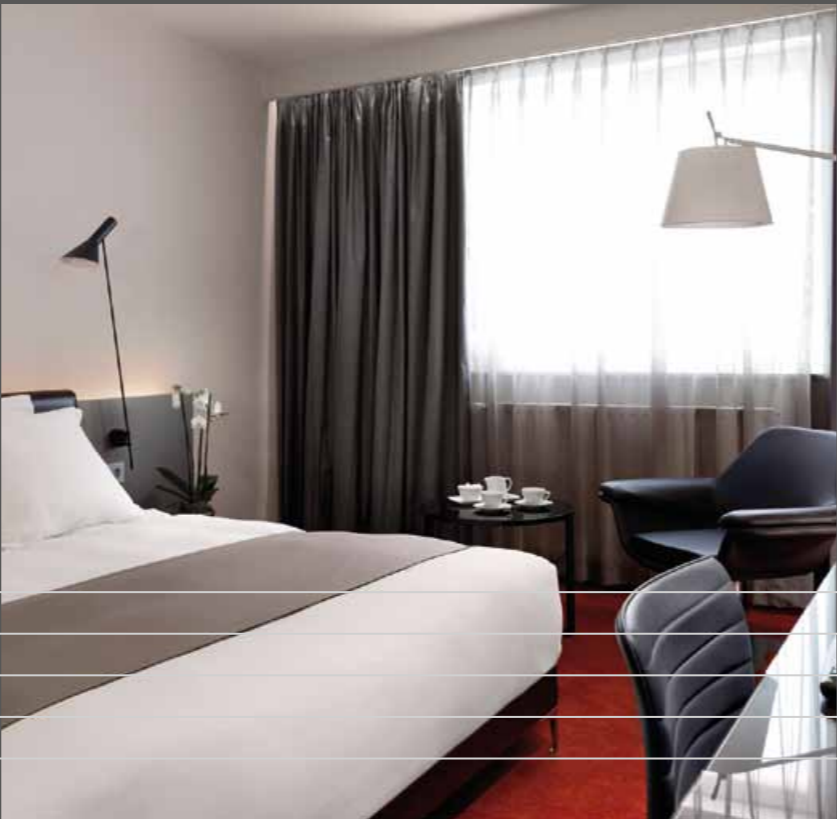
- Ten flexible meeting rooms, most with natural daylight
- Upscale boardroom for team meetings and receptions
- Luxurious private dining room for exclusive occasions
- Dedicated and experienced Meetings & Events team
- Close to the Amsterdam Stock Exchange and key business parks
- 142 superior guestrooms and suites in the Victoria Wing
- 164 sleek Urban rooms in the self-contained Urban Wing
- Seasons Garden Restaurant for buffet breakfasts and group dining
- Park Plaza Brasserie for international cuisine
- Active Club featuring fitness, Finnish sauna, beauty studio and indoor swimming pool



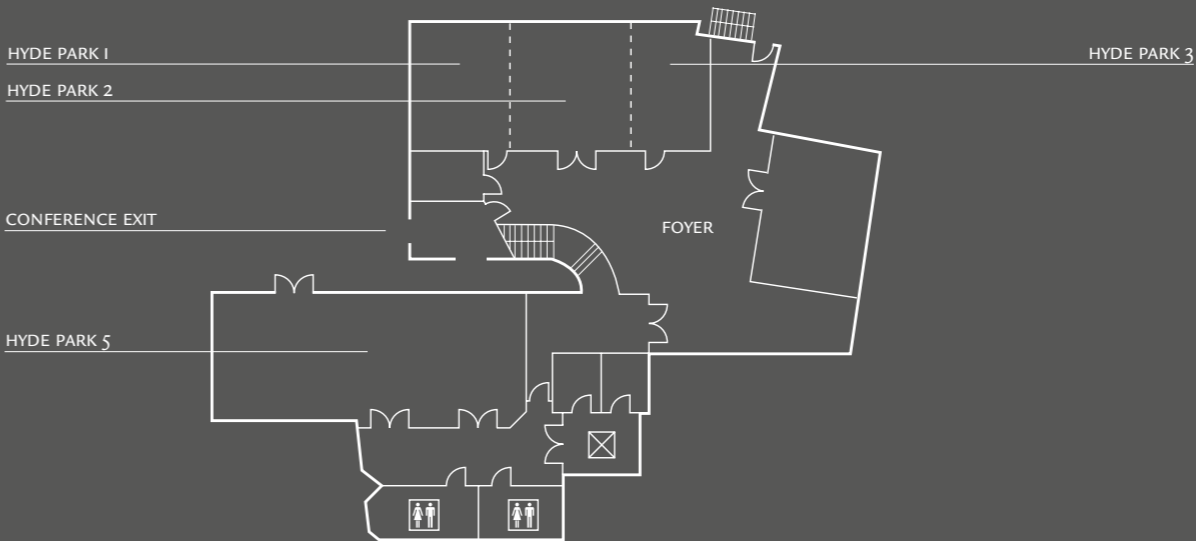
Damrak 1-5, 1012 LG Amsterdam
T: +31 (0) 20 524 0617 F: +31 (0)20 625 2997
ppvameetings@pphe.com
parkplaza.com/victoriaamsterdam

- | | | |
|---------------------------------|------------------------------------|---------------------------------------|
| 1 PARK PLAZA VICTORIA AMSTERDAM | 6 CONCERT HALL | 11 KALVERSTAAT (MAIN SHOPPING STREET) |
| 2 RIJKSMUSEUM | 7 PARK PLAZA VONDELPARK, AMSTERDAM | 12 ROYAL PALACE |
| 3 STEDELIJK MUSEUM | 8 ANTIQUE AND ART GALLERIES | |
| 4 VAN GOGH MUSEUM | 9 LEIDSEPLEIN | |
| 5 P.C. HOOFDSTRAAT | 10 ANNE FRANK HOUSE | |

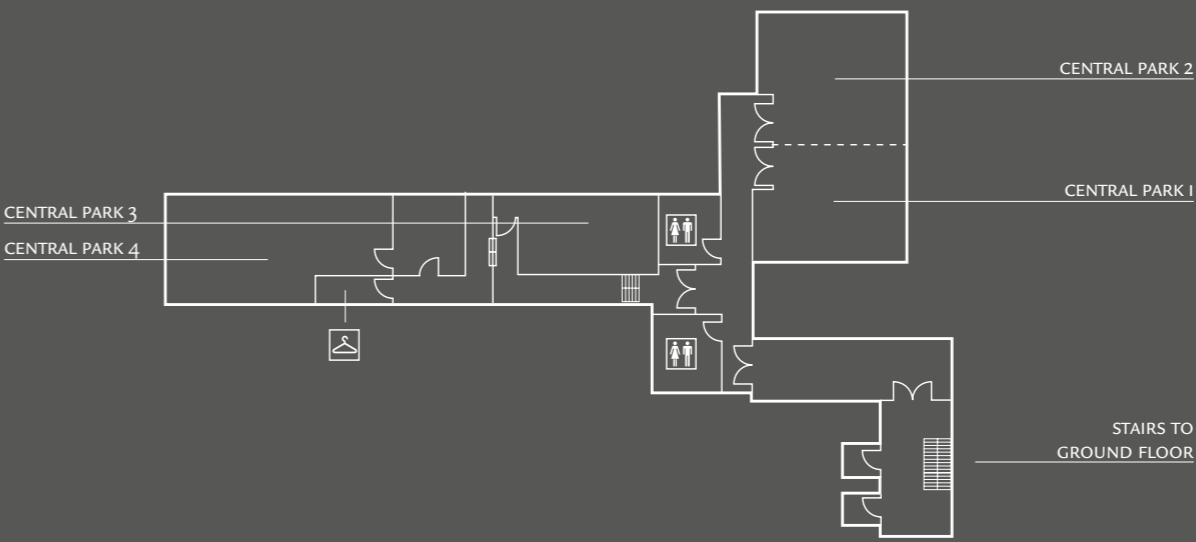
ROOM NAME	DIMENSION W X L X H(M)	THEATRE	BOARD ROOM	U-SHAPE ROOM	CLASS ROOM	CABARET DINNER ROOM	DINNER DANCE	RECEPTION
LEVEL -1								
VONDELPARK 1	3.66 x 3.99 x 2.29	-	5	-	-	-	-	-
VONDELPARK 2	9.92 x 7.10 x 2.75	40	22	18	30	30	70	-
VONDELPARK PRE-FUNCTION SPACE	4.78 x 7.25 x 2.75	-	-	-	-	-	-	-
URBAN WING								
HYDE PARK 1	5.5 x 6.5 x 2.75	30	16	12	18	20	24	-
HYDE PARK 2	7.0 x 6.5 x 2.75	45	20	16	32	26	40	-
HYDE PARK 1 & 2	12.5 x 6.5 x 2.75	80	40	36	48	48	56	-
HYDE PARK 1, 2 & 3	17.5 x 6.5 x 2.75	110	50	46	70	70	80	-
HYDE PARK 2 & 3	11.5 x 6.5 x 2.75	70	32	28	40	30	56	-
HYDE PARK 3	4.5 x 6.5 x 2.75	30	12	8	12	16	-	-
HYDE PARK 5	17.0 x 7.5 x 2.75	130	56	46	70	70	80	-
MEZZANINE								
CENTRAL PARK 1	7.5 x 9.0 x 2.75	40	20	16	24	24	30	-
CENTRAL PARK 2	7.5 x 9.0 x 2.75	40	20	16	24	24	30	-
CENTRAL PARK 1 & 2	15.0 x 9.0 x 2.75	80	40	36	50	50	70	-
CENTRAL PARK 3	6.4 x 4.0 x 2.75	-	10	-	-	-	-	-
CENTRAL PARK 4	13.5 x 6.0 x 2.75	-	20	-	-	-	-	-



URBAN WING / LEVEL -1



MEZZANINE LEVEL

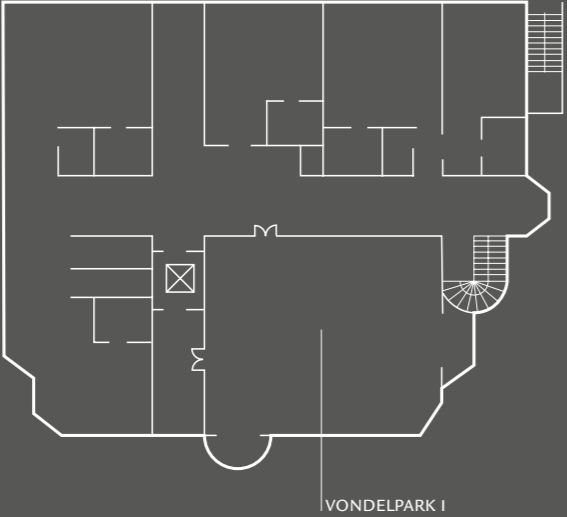


- Restrooms
- Cloakroom
- Lift

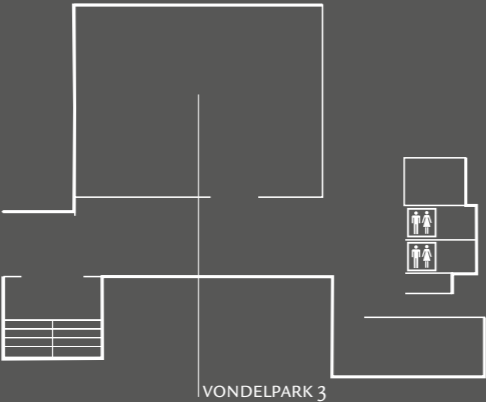




BUILDING 1, LEVEL 1



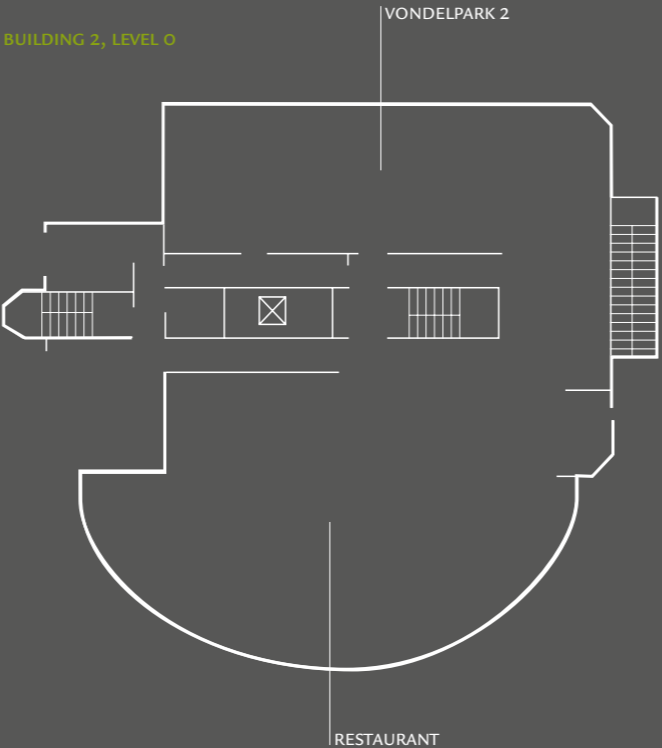
BUILDING 3



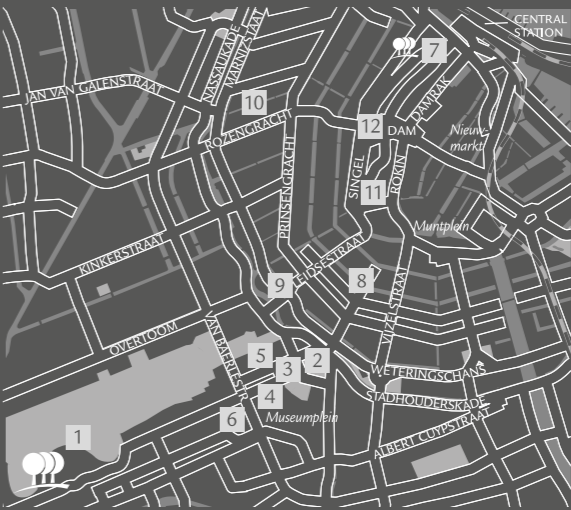
Restrooms

Lift

BUILDING 2, LEVEL 0



ROOM NAME	DIMENSION W X L X H (M)	THEATRE ROOM	BOARD ROOM	U-SHAPE ROOM	CLASS ROOM	CABARET DINNER	DINNER DANCE	RECEP- TION
BUILDING 1, LEVEL 1								
VONDELPARK 1	9.3 x 7.5 x 2.95	30	20	16	30	24	-	-
BUILDING 2, LEVEL 0								
VONDELPARK 2	14.35 x 5.2 x 2.55	50	28	26	36	36	30	-
RESTAURANT	13.2 x 10.3 x 2.55	150	-	-	-	-	70	-
BUILDING 3								
VONDELPARK 3	8.6 x 6.6 x 2.55	25	12	12	20	20	-	-



1 PARK PLAZA VONDELPARK, AMSTERDAM	6 CONCERT HALL	11 KALVERSTAAT (MAIN SHOPPING STREET)
2 RIJKSMUSEUM	7 PARK PLAZA VICTORIA AMSTERDAM	12 ROYAL PALACE
3 STEDELIJK MUSEUM	8 ANTIQUE AND ART GALLERIES	
4 VAN GOGH MUSEUM	9 LEIDSEPLEIN	
5 P.C. HOOFDSTRAAT	10 ANNE FRANK HOUSE	

PARK PLAZA VONDELPARK, AMSTERDAM

A STYLISH MEETINGS AND EVENTS VENUE
ADJACENT TO ONE OF AMSTERDAM'S MOST
DELIGHTFUL PARKS.

Just 15 minutes from Amsterdam Schiphol
Airport and overlooking one of the city's loveliest
parks, Park Plaza Vondelpark, Amsterdam is
perfect for events for up to 50 guests. The hotel
offers a peaceful haven surrounded by prestigious
boutiques, fine restaurants and inspiring museums.

- Three meeting rooms for meetings, training
days and seminars
- Bespoke menus, staging and decorations available
- Spectacular views across the Vondelpark
- 129 sleek Superior and Executive guestrooms
- Eight luxurious Suites with living area,
work space and whirlpool bath
- One spectacular Penthouse Suite also featuring
a kitchen and fireplace
- Contemporary restaurant serving delicious
buffet breakfasts
- V Bar & Lounge for fine wines and finger food



Koninginneweg 34-36, 1075 CZ Amsterdam

T: +31 (0) 20 524 0617 F: +31 (0)20 625 2997

ppvomeetings@pphe.com

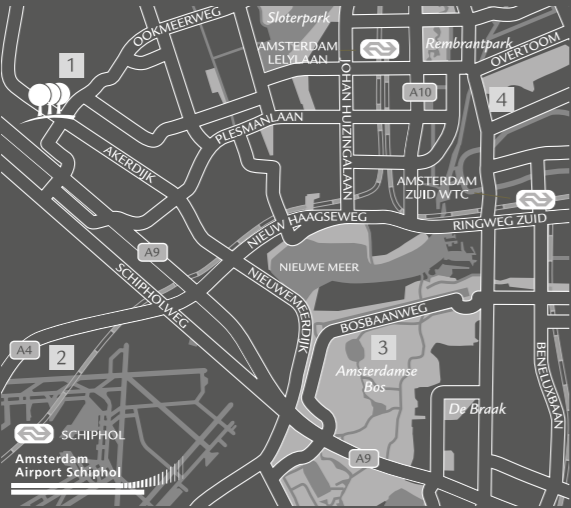
parkplaza.com/vondelpark

PARK PLAZA AMSTERDAM AIRPORT

ONE OF THE LARGEST CONFERENCE AND MEETING VENUES WITHIN THE GREATER AMSTERDAM AREA WITH CAPACITY FOR UP TO 800 DELEGATES.

Ideal for large meetings, conferences and events, Park Plaza Amsterdam Airport is ten minutes from Amsterdam Schiphol Airport and the city centre. A choice of meeting rooms, all featuring natural daylight, is complemented by an Executive Boardroom, Executive Lounge and ballroom.

- 20 multi-functional meeting rooms with multiple breakout zones
- Executive boardroom for up to 16 delegates
- Breathtaking 650m² Charles de Gaulle Room
- Comprehensive on-site parking for up to 250 cars
- Complimentary airport shuttle
- Perfectly located for Amsterdam city centre and transport hubs
- 342 spacious superior and executive rooms
- Two restaurants offering varied cuisine
- Relaxing Whiskey Lobby Bar for pre-dinner cocktails
- Inviting spa and wellness centre



Melbournestraat 1, 1175 RM Lijnden

T: +31 (0) 20 655 1007 F: +31 (0) 20 658 0585

ppameetings@pphe.com

parkplaza.com/amsterdamairport

1 PARK PLAZA
AMSTERDAM AIRPORT

2 AMSTERDAM AIRPORT
SCHIPHOL

3 AMSTERDAMSE BOS

4 PARK PLAZA VONDELPARK,
AMSTERDAM

ROOM NAME	DIMENSION W X L X H(M)	THEATRE	BOARD ROOM	U-SHAPE	CLASS ROOM	CABARET DINNER	BAN-QUET	CARRE
GROUND FLOOR PARIS								
EXECUTIVE BOARDROOM	9.30 x 6.5 x 4.2	-	16	-	-	-	-	-
CHARLES DE GAULLE 1	7.5 x 15.0 x 3.85	90	30	34	28	36	-	50
CHARLES DE GAULLE 2	31.2 x 37.4 x 3.4	90	30	34	28	36	-	50
CHARLES DE GAULLE 3	31.2 x 37.4 x 3.4	200	44	48	80	72	-	100
CHARLES DE GAULLE 1 + 2	31.2 x 37.4 x 3.4	200	60	50	100	72	-	170
CHARLES DE GAULLE 2 + 3	31.2 x 37.4 x 3.4	300	80	60	120	108	-	180
CHARLES DE GAULLE 1 + 2 + 3	31.2 x 37.4 x 3.4	450	150	130	180	144	-	190
CHARLES DE GAULLE 1 + 2 + 3 & FOYER	31.2 x 37.4 x 3.4	800	-	-	-	192	-	350

2ND FLOOR NEW YORK								
JOHN F KENNEDY 1	31.2 x 37.4 x 3.4	30	16	14	18	-	-	20
JOHN F KENNEDY 2	31.2 x 37.4 x 3.4	30	16	14	18	-	-	20
JOHN F KENNEDY 3	31.2 x 37.4 x 3.4	30	16	14	18	-	-	20
JOHN F KENNEDY 4	31.2 x 37.4 x 3.4	-	12	-	-	-	-	-
JOHN F KENNEDY 5	31.2 x 37.4 x 3.4	50	16	14	24	24	-	30
JOHN F KENNEDY 6	31.2 x 37.4 x 3.4	30	16	14	18	-	-	20
JOHN F KENNEDY 7	31.2 x 37.4 x 3.4	-	6	-	-	-	-	-
JOHN F KENNEDY 8	31.2 x 37.4 x 3.4	30	16	14	18	-	-	20
JOHN F KENNEDY 9	31.2 x 37.4 x 3.4	30	16	14	18	-	-	20
JOHN F KENNEDY 10	31.2 x 37.4 x 3.4	-	12	-	-	-	-	-

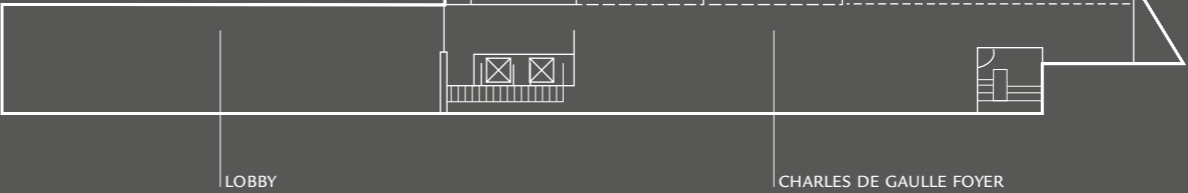
3RD FLOOR LONDON								
HEATHROW 1	31.2 x 37.4 x 3.4	30	16	14	18	-	-	20
HEATHROW 2	31.2 x 37.4 x 3.4	30	16	14	18	-	-	20
HEATHROW 3	31.2 x 37.4 x 3.4	230	40	32	100	96	-	100
HEATHROW 4	31.2 x 37.4 x 3.4	-	12	-	-	-	-	-
HEATHROW 5	31.2 x 37.4 x 3.4	30	16	14	18	-	-	20
HEATHROW 6	31.2 x 37.4 x 3.4	70	20	26	30	36	-	24

GROUND FLOOR PARIS

CHARLES DE GAULLE 1

CHARLES DE GAULLE 2

CHARLES DE GAULLE 3



LOBBY

CHARLES DE GAULLE FOYER

2ND FLOOR NEW YORK

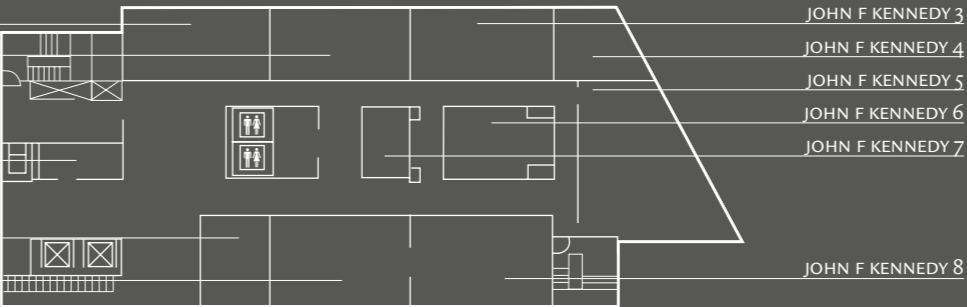
JOHN F KENNEDY 1

JOHN F KENNEDY 2

BUSINESS CENTER

JOHN F KENNEDY 10

JOHN F KENNEDY 9



JOHN F KENNEDY 3

JOHN F KENNEDY 4

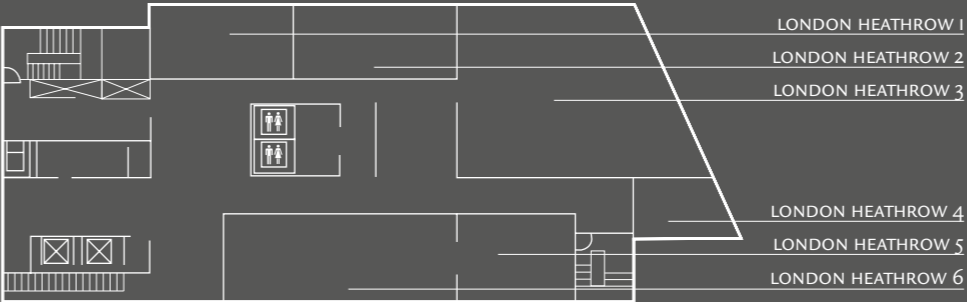
JOHN F KENNEDY 5

JOHN F KENNEDY 6

JOHN F KENNEDY 7

JOHN F KENNEDY 8

3RD FLOOR LONDON



LONDON HEATHROW 1

LONDON HEATHROW 2

LONDON HEATHROW 3

LONDON HEATHROW 4

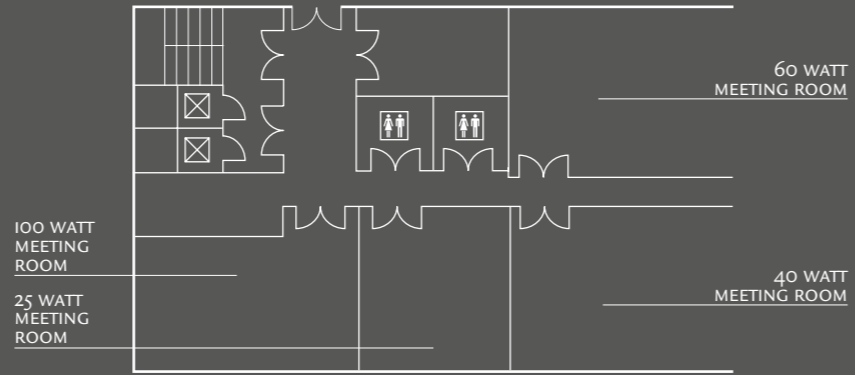
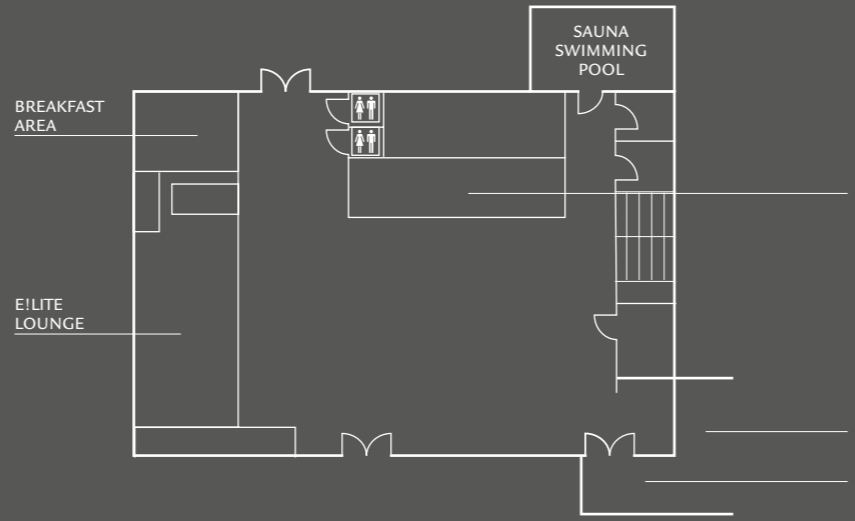
LONDON HEATHROW 5



LONDON HEATHROW 6

Restrooms

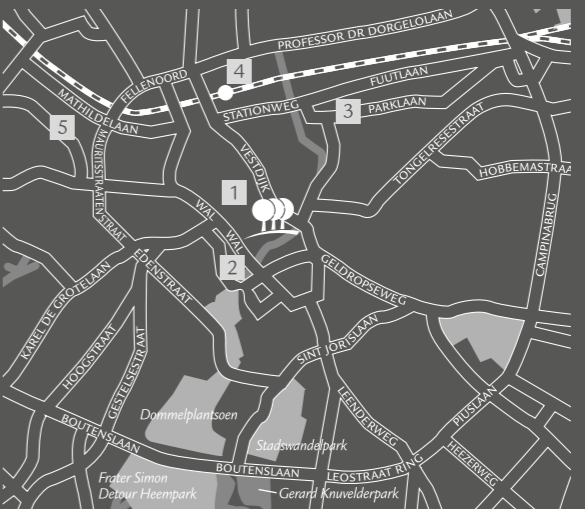
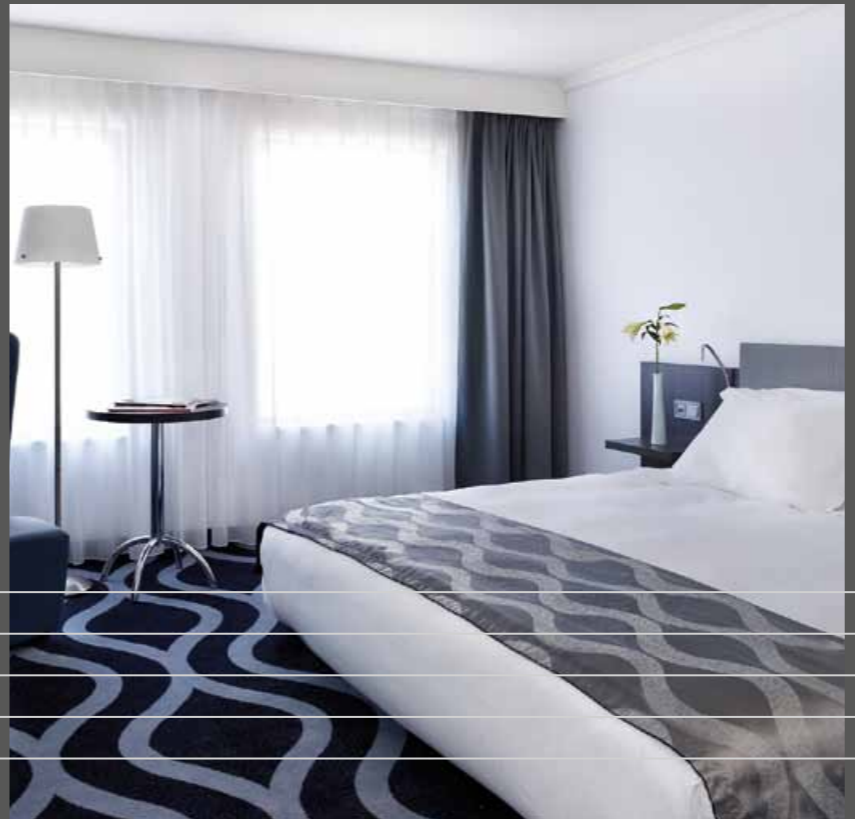
Lift





 Restrooms
 Lift

ROOM NAME	DIMENSION W X L X H (M)	THEATRE	BOARD ROOM	U-SHAPE ROOM	CLASS ROOM	CABARET DINNER	DINNER DANCE	RECEP- TION
CONFERENCE FLOOR								
25 WATT BOARDROOM	8.0 x 7.0 x 3.0	30	20	15	20	25	-	-
40 WATT BOARDROOM	11.0 x 8.0 x 3.0	75	35	30	40	50	-	-
60 WATT BOARDROOM	11.0 x 8.0 x 3.0	75	35	30	40	50	-	-
100 WATT BOARDROOM	10.0 x 7.0 x 3.0	-	20	-	-	-	-	-



- 1 PARK PLAZA EINDHOVEN
- 2 MODERN ARTS VAN ABBE MUSEUM
- 3 EFFENAAR MUSIC CENTRE & HEUVEL GALERIJ
- 4 CENTRAL STATION
- 5 PSV EINDHOVEN STADIUM

PARK PLAZA EINDHOVEN

RENOWNED FOR WORLD-CLASS PERSONAL SERVICE, PARK PLAZA EINDHOVEN IS A LEADING VENUE FOR SMALL MEETINGS, TRAINING SESSIONS AND PRIVATE FUNCTIONS.

Park Plaza Eindhoven offers a fresh setting for meetings, conferences, parties and gala dinners in the heart of the Brainport of the Netherlands. Flexible spaces, outstanding dining options and inviting accommodation combine with attentive service to provide the ultimate event venue.

- Three light and airy meeting rooms for up to 75 delegates
- 100 Watt Boardroom with interactive smartboard and Bose sound system
- Private on-site parking
- Close to key transport hubs and Eindhoven's major business districts
- 104 remodelled guestrooms with work desk and flatscreen TV
- Suite guests enjoy enhanced space and VIP treatment
- Elite Lounge serving lunch, dinner and light bites
- Three fine restaurants: Mandarin Garden (Cantonese), Momoyama (sushi & teppanyaki) and Mei Ling (dim sum)
- Health club with indoor swimming pool, fitness area and Finnish saunas

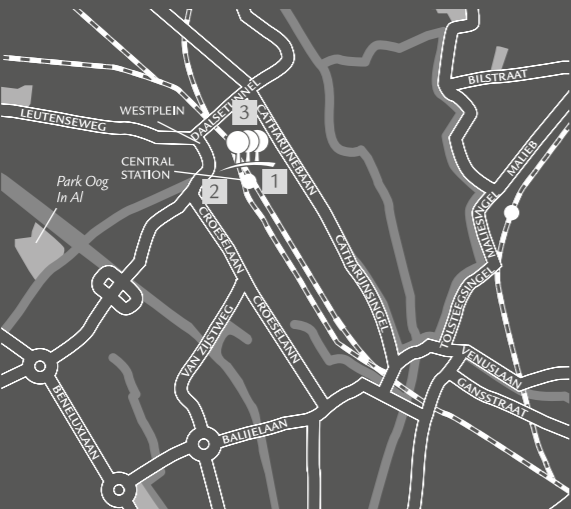

Geldropseweg 17, 5611 SC Eindhoven
T: +31 (0) 40 214 6500 F: +31 (0) 40 212 1555
ppemeetings@pphe.com
parkplaza.com/eindhoven

PARK PLAZA UTRECHT

A STRIKING GLASS-FRONTED MEETINGS VENUE
IN CENTRAL UTRECHT CLOSE TO THE JAARBEURS
EXHIBITION & CONVENTION CENTRE.

Located close to the city’s key transport hubs,
Park Plaza Utrecht lends itself to corporate
meetings and private entertaining. Light and airy,
the hotel’s meeting rooms can host up to 120
delegates, while smaller functions can be staged
in the exclusive Westpark Boardroom.

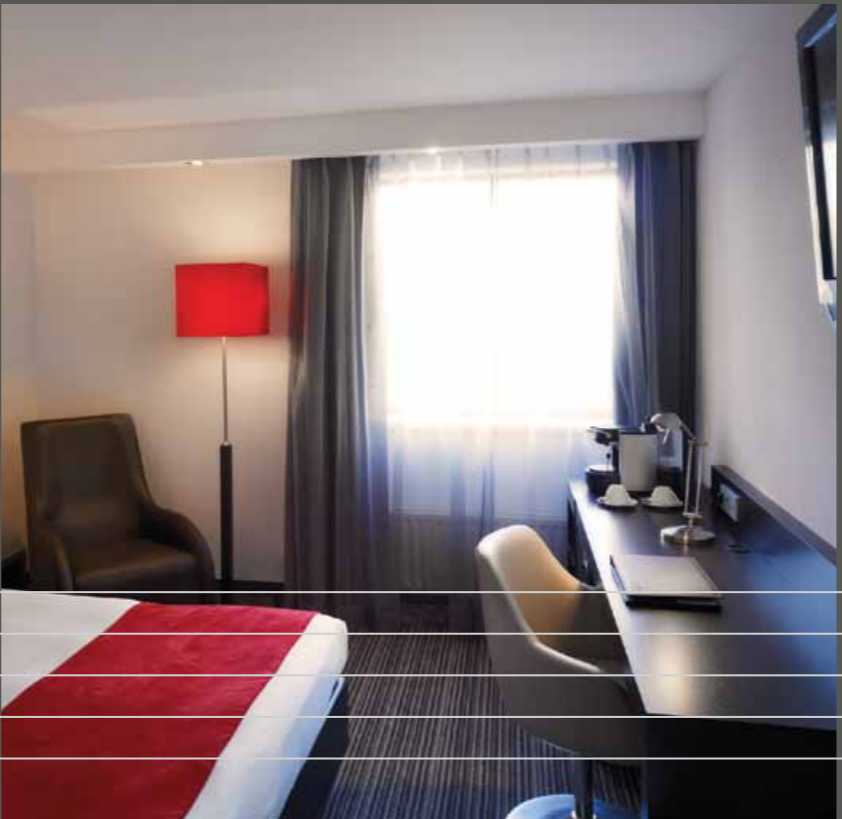
- 11 meeting rooms, each with natural daylight and spectacular views
- Private dining room for up to 40 guests
- Extensive on-site parking
- 30 minutes from Amsterdam Schiphol Airport
- 120 contemporary guestrooms, many overlooking the Utrecht skyline
- Executive Level rooms feature Nespresso machines and city views
- Plein 50, the hotel’s restaurant, bar & brasserie, serves exquisite international dishes
- Modern health centre boasting a fitness and sauna



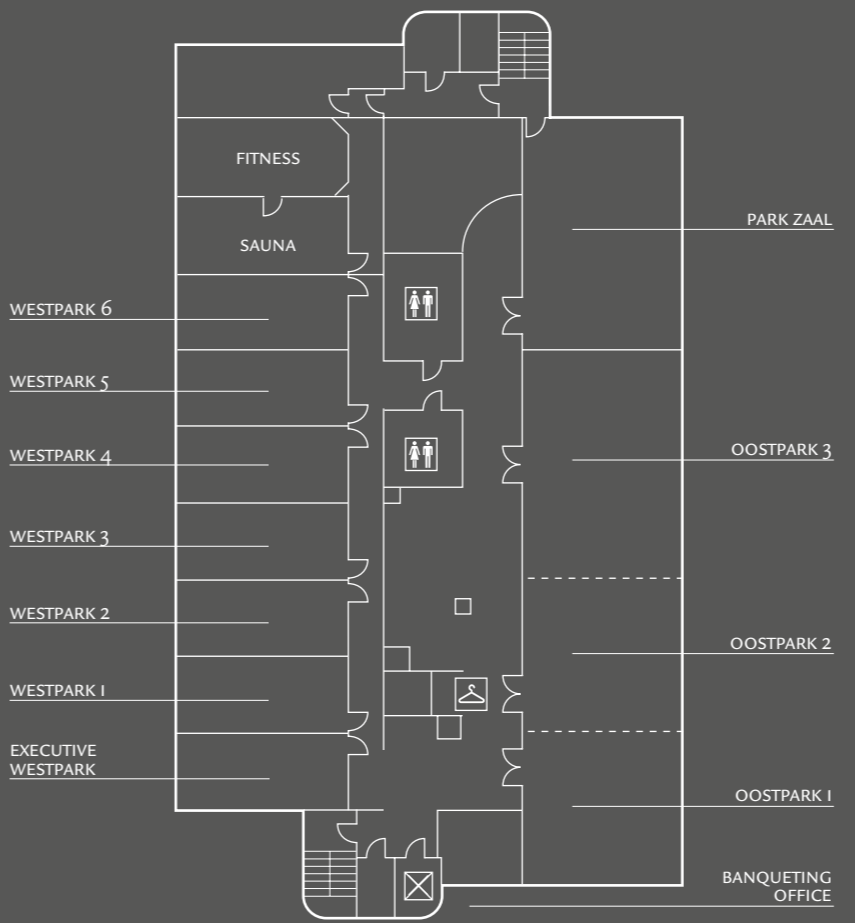
- 1 PARK PLAZA UTRECHT
- 2 THE JAARBEURS EXHIBITION & CONVENTION CENTRE
- 3 HOOG CATHARIJNE SHOPPING CENTRE

Westplein 50, 3531 BL Utrecht
T: +31 (0) 30 292 5170 F: +31 (0) 30 292 5199
ppumeetings@pphe.com
parkplaza.com/utrecht

ROOM NAME	DIMENSION W X L X H(M)	THEATRE	BOARD	U-SHAPE	CLASS	CABARET DINNER	DINNER	RECEP-	DANCE	TION
CONFERENCE FLOOR										
PARK ZAAL	10.0 x 7.0 x 2.55	50	30	30	40	40	30	-	-	-
OOSTPARK 1	7.0 x 7.0 x 2.55	30	25	18	25	25	25	-	-	-
OOSTPARK 2	7.0 x 7.0 x 2.55	30	25	18	25	25	25	-	-	-
OOSTPARK 3	10.0 x 7.0 x 2.55	60	40	30	40	40	40	-	-	-
OOSTPARK 1 & 2	14.0 x 7.0 x 2.55	80	55	42	60	60	50	-	-	-
OOSTPARK 2 & 3	17.0 x 7.0 x 2.55	100	-	-	80	80	70	-	-	-
OOSTPARK 1, 2 & 3	24.0 x 7.0 x 2.55	120	-	-	120	120	110	-	-	-
EXECUTIVE WESTPARK	7.0 x 3.5 x 2.55	-	12	-	-	-	-	-	-	-
WESTPARK 1	7.0 x 3.5 x 2.55	12	12	10	10	-	-	-	-	-
WESTPARK 2	7.0 x 3.5 x 2.55	12	12	10	10	-	-	-	-	-
WESTPARK 3	7.0 x 3.5 x 2.55	12	12	10	10	-	-	-	-	-
WESTPARK 4	7.0 x 3.5 x 2.55	12	12	10	10	-	-	-	-	-
WESTPARK 5	7.0 x 3.5 x 2.55	12	12	10	10	-	-	-	-	-
WESTPARK 6	7.0 x 3.5 x 2.55	12	12	10	10	-	-	-	-	-
PRIVATE DINING ROOM	8.0 x 8.0 x 2.55	30	24	16	18	45	-	-	-	-



CONFERENCE FLOOR



- Restrooms
- Cloakroom
- Lift



“The event was very successful, and it is with great thanks to you and all the staff at the hotel that worked really hard to ensure the event ran smoothly on the day.”

Ed Balls, Labour Party Lunch
Park Plaza Leeds

UNITED KINGDOM

UNITED KINGDOM

Steeped in history and culture, it's no surprise that the United Kingdom is one of the world's leading destinations. Its capital, London, is blessed with historical sites at every turn, from the landmark Houses of Parliament to Buckingham Palace and St Paul's Cathedral. World-class theatre, opera and contemporary music are performed every day, and award-winning restaurants and lively nightclubs attract visitors from the world over.

Recently Cardiff has re-defined itself with developments such as the Millennium Stadium and the Welsh National Assembly and Millennium Centre on the rejuvenated Cardiff Bay waterfront. As Yorkshire's commercial capital, Leeds is capitalising on its Victorian past to create awe-inspiring attractions such as the Royal Armouries that are both contemporary and rich in history. And once known for lace and pharmaceuticals, the city of Nottingham is still associated with the legendary 13th-century outlaw Robin Hood.

aim
An Assurance of Excellence
Making Meetings Better

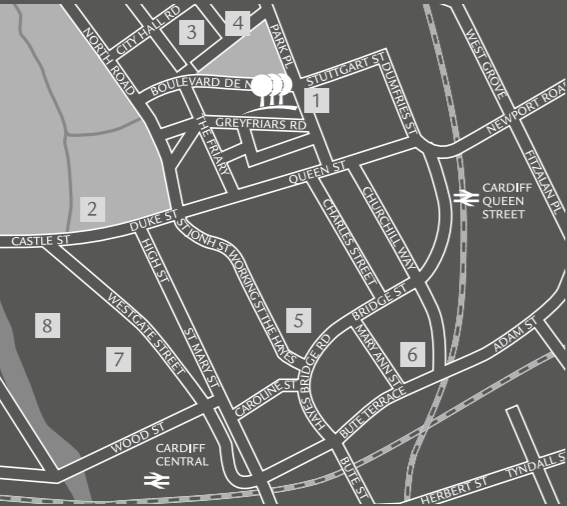


PARK PLAZA CARDIFF

CONTEMPORARY MEETING SPACE COMBINES WITH EXCEPTIONAL PERSONAL SERVICE AND ATTENTION TO DETAIL IN THE HEART OF THE WELSH CAPITAL.

Park Plaza Cardiff offers flexible meeting and events solutions for up to 150 delegates or 250 guests in the heart of the city centre. Eleven meeting rooms are complemented by art-inspired guestrooms, award-winning cuisine and a two-floor nightclub.

- 11 function suites, most with natural daylight
- Exclusive Kuku Club nightclub for private parties seven days a week
- Licensed for weddings and civil ceremonies
- Close to the Millennium Stadium and Cardiff Castle
- 129 deluxe guestrooms and Executive rooms with bespoke art
- Laguna Kitchen & Bar for enticing menus mainly using Welsh produce
- Laguna Health & Spa offering eight treatment rooms with gym, jacuzzi, steam room and 20m pool
- All function rooms and guest rooms are fully air-conditioned



- 1

PARK PLAZA CARDIFF
- 2

CARDIFF CASTLE
- 3

CITY HALL
- 4

NATIONAL MUSEUM & GALLERY OF WALES
- 5

ST DAVID'S HALL
- 6

CARDIFF INTERNATIONAL ARENA
- 7

MILLENNIUM STADIUM
- 8

CARDIFF RUGBY CLUB



Greyfriars Road, Cardiff CF10 3AL

T: +44 (0) 2920 111 111 F: +44 (0) 2920 111 112

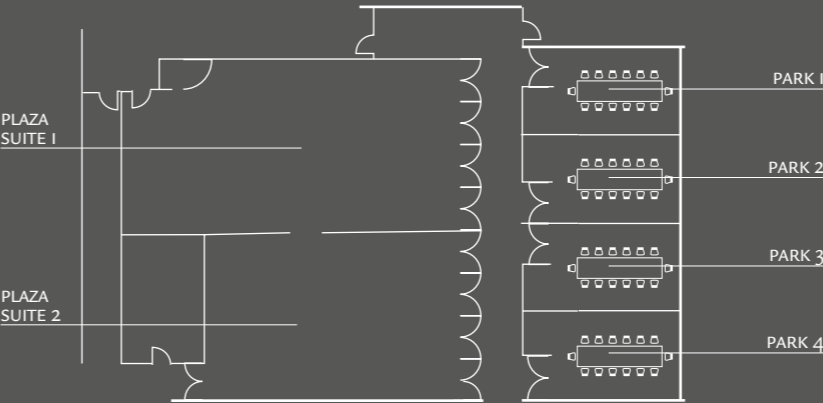
ppcconf@parkplazahotels.co.uk

parkplaza.com/cardiff

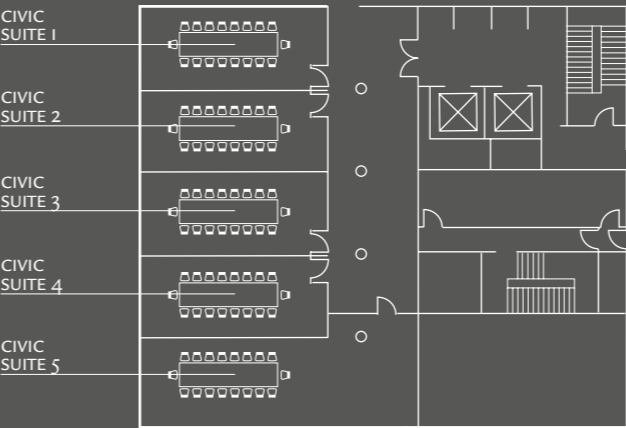
ROOM NAME	DIMENSION W X L X H(M)	THEATRE	BOARD ROOM	U-SHAPE	CLASS ROOM	CABARET DINNER	DINNER DANCE	RECEPTION
PARK FLOOR								
PLAZA SUITE	14.0 x 15.5	160	-	-	70	80	150	250
PLAZA SUITE 1	14.0 x 8.0	125	-	30	60	48	80	130
PLAZA SUITE 2	11.3 x 7.5	-	-	10	-	-	60	100
PARK SUITE 1	6.4 x 4.0	20	12	10	15	-	-	-
PARK SUITE 2	6.4 x 4.1	20	12	10	15	-	-	-
PARK SUITE 3	6.4 x 4.1	20	12	10	15	-	-	-
PARK SUITE 4	6.4 x 4.0	20	12	10	15	-	-	-
PARK SUITES 1 & 2	5.4 x 8.1	50	24	15	30	-	24	50
PARK SUITES 3 & 4	5.4 x 8.1	50	24	15	30	-	24	50
PARK SUITE 1-3	5.4 x 12.2	75	36	20	45	-	36	75
PARK SUITE 1-4	5.4 x 16.2	120	48	28	60	36	48	100
FIRST FLOOR								
CIVIC SUITE 1	8.4 x 3.8	30	20	15	-	-	-	-
CIVIC SUITE 2	8.4 x 3.8	30	20	15	-	-	-	-
CIVIC SUITE 3	8.4 x 3.8	30	20	15	-	-	-	-
CIVIC SUITE 4	8.4 x 3.8	30	20	15	-	-	-	-
CIVIC SUITE 5	13.0 x 3.94	60	30	25	18	20	30	50
GROUND FLOOR								
KUKU CLUB	16.5 x 5.0 x 3.5	-	-	-	-	-	-	180



PARK FLOOR

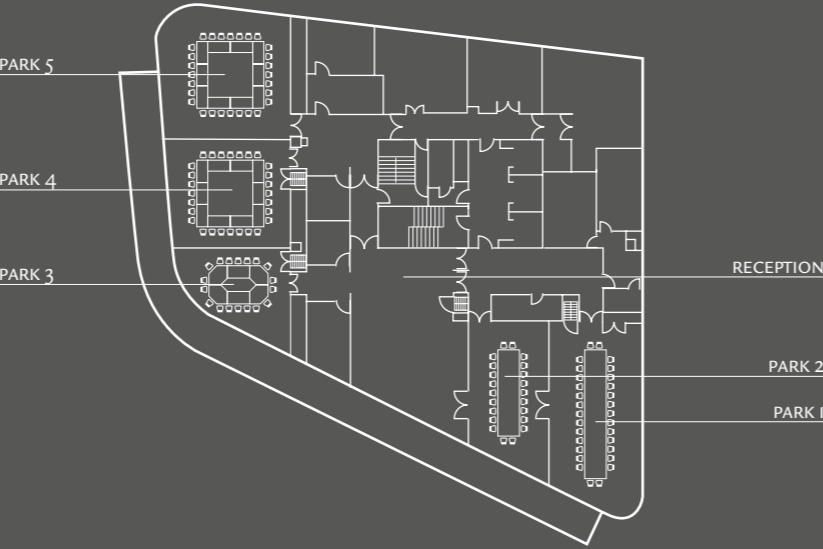


FIRST FLOOR

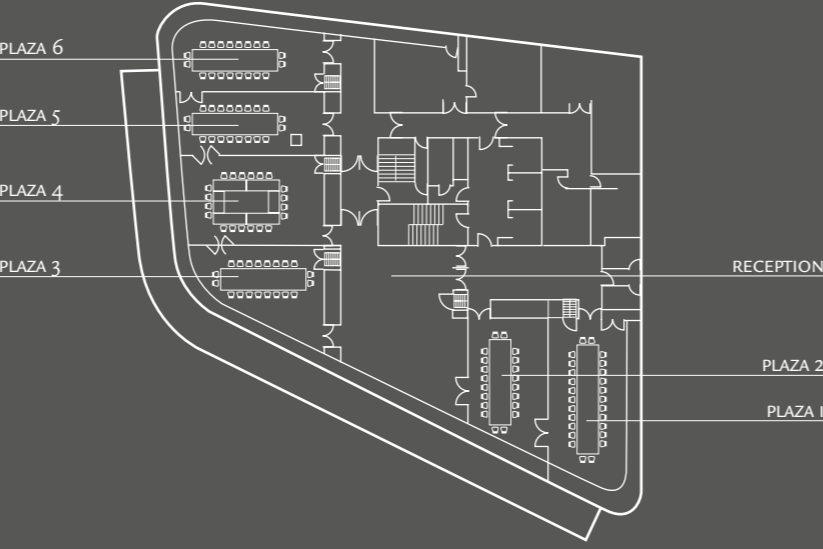




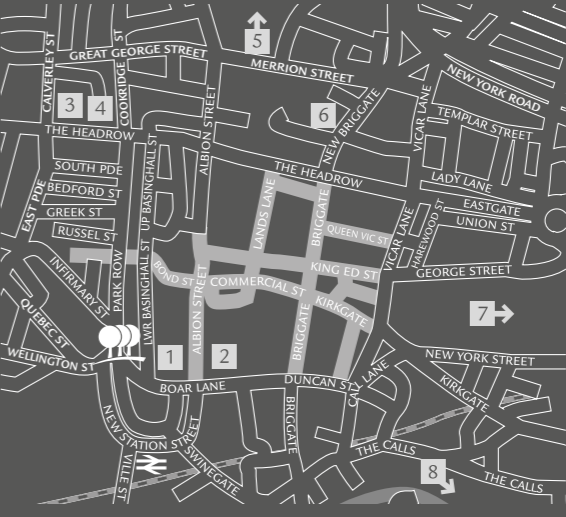
PARK FLOOR



PLAZA FLOOR



ROOM NAME	DIMENSION W X L X H (M)	THEATRE	BOARD ROOM	U-SHAPE	CLASS ROOM	CABARET DINNER	DINNER DANCE	RECEP- TION
PARK FLOOR								
PARK 1	6.3 x 10.9 x 2.2	70	30	30	30	30	40	-
PARK 2	5.7 x 9.8 x 2.2	50	18	18	24	20	24	-
PARK 3	7.3 x 7.75 x 2.2	30	12	12	12	16	20	-
PARK 4	7.2 x 7.75 x 2.2	60	20	16	24	30	30	-
PARK 5	8.3 x 8.4 x 2.2	70	15	20	24	36	40	-
PARK 1-2	12.0 x 10.38 x 2.2	100	40	40	57	63	80	-
PARK 3-4	14.5 x 7.75 x 2.2	80	30	28	39	60	80	-
PARK 3-5	7.99 x 22.8 x 2.2	200	50	40	72	120	220	-
PARK 4-5	15.5 x 8.1 x 2.2	110	42	38	57	78	135	-
PARK FLOOR	-	-	-	-	-	-	-	350
PLAZA FLOOR								
PLAZA 1	5.6 x 9.7 x 2.2	70	30	30	30	30	40	-
PLAZA 2	5.3 x 7.1 x 2.2	50	18	18	24	20	24	-
PLAZA 3	7.2 x 9.15 x 2.2	30	12	9	16	16	20	-
PLAZA 4	5.65 x 9.6 x 2.2	60	15	18	24	27	30	-
PLAZA 5	4.3 x 10.0 x 2.2	35	12	12	12	12	20	-
PLAZA 6	3.6 x 10.0 x 2.2	30	12	9	15	12	12	-
PLAZA 1-2	10.9 x 8.4 x 2.2	80	33	35	49	54	60	-
PLAZA 3-4	12.85 x 9.3 x 2.2	96	30	20	42	45	65	-
PLAZA 3-5	17.15 x 9.5 x 2.2	144	40	30	63	66	126	-
PLAZA 3-6	20.75 x 9.6 x 2.2	180	50	40	72	102	200	-
PLAZA 4-5	9.95 x 9.8 x 2.2	85	31	35	45	45	70	-
PLAZA 4-6	13.55 x 9.83 x 2.2	120	-	-	63	63	120	-
PLAZA 5-6	7.9 x 10.0 x 2.2	60	21	26	30	45	55	-
PLAZA FLOOR	-	-	-	-	-	-	-	350



- 1

PARK PLAZA LEEDS
- 2

TRINITY LEEDS
- 3

CITY ART GALLERY
- 4

MILLENNIUM SQUARE
- 5

FIRST DIRECT ARENA
- 6

LEEDS GRAND THEATRE & OPERA HOUSE
- 7

WEST YORKSHIRE PLAYHOUSE
- 8

ROYAL ARMOURIES MUSEUM

PARK PLAZA LEEDS

CAPACITY FOR UP TO 350 DELEGATES ACROSS TWO DEDICATED MEETINGS AND EVENTS FLOORS OPPOSITE THE CITY’S TRAIN STATION.

From dinners to board meetings and training sessions overlooking City Square, Park Plaza Leeds offers a flexible events solution close to the north of the UK’s airports, motorways and railway network. With 11 meeting rooms, space can be configured for meetings, corporate events and social gatherings.

- Two meetings and events floors and four purpose-built suites
- 11 meeting rooms with natural daylight and wraparound views
- Four Suites including a Penthouse Apartment with views of the Leeds skyline
- Licensed for weddings and civil ceremonies
- 187 contemporary guestrooms and suites
- Spacious Executive Rooms and Executive Lounge
- Award-winning Chino Latino® Pan-Asian Restaurant & Bar
- Scene Lobby Bar overlooking City Square
- Fully equipped fitness centre



Boar Lane, City Square, Leeds LS1 5NS

T: +44 (0) 844 415 6720 F: +44 (0) 844 415 6721

pplconf@pphe.com

parkplaza.com/leeds

PARK PLAZA COUNTY HALL LONDON

WITH A REPUTATION FOR EXCELLENT SERVICE, PARK PLAZA COUNTY HALL LONDON IS AN IMPECCABLE MEETINGS VENUE IN ONE OF LONDON’S MOST ICONIC LOCATIONS.

Conveniently located for Canary Wharf, the City and the West End, Park Plaza County Hall London offers a choice of meeting spaces and private dining in secluded penthouses. All meeting rooms boast natural daylight, modern technology and breakout areas with iconic views.

- Six versatile function suites for up to 100 delegates
- Intimate Executive Lounge with tranquil urban garden
- Seven Penthouse Apartments with balconies for meetings and parties
- Spectacular South Bank location close to the London Eye
- 398 spacious guestrooms and suites
- L’Italiano Restaurant for great-value classic Italian dishes
- Funky Spectrum Bar for cocktails and nightcaps
- Wellness centre with gym, steam room, sauna and Aurora Spa



1 Addington Street, London SE1 7RY

T: +44 (0) 844 415 6760 F: +44 (0) 844 415 6761

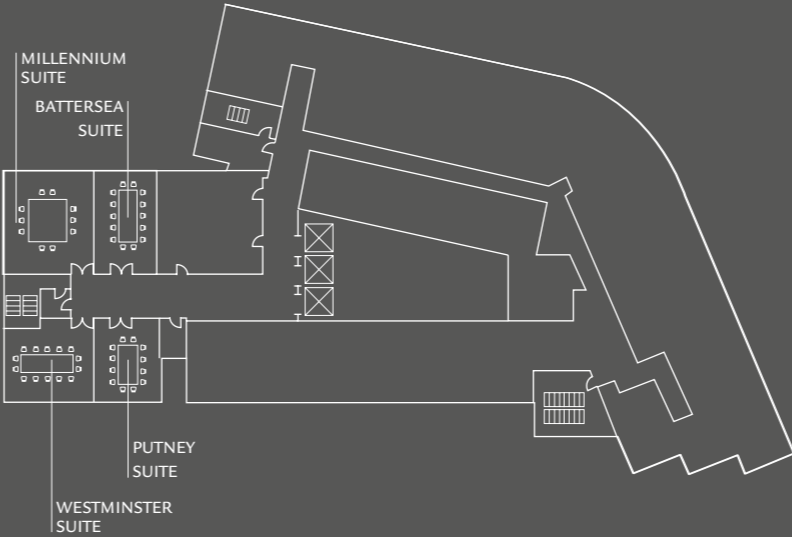
ppchconf@pphe.com

parkplaza.com/countyhall

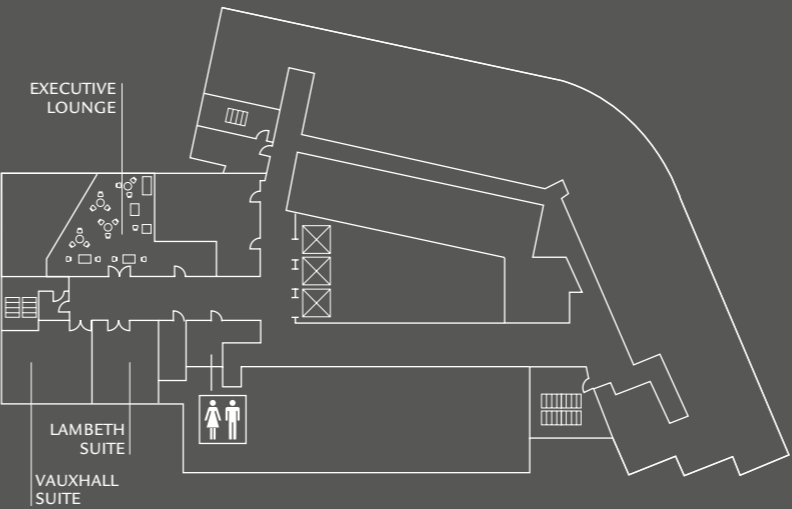
- | | | |
|--------------------------------------|------------------------|------------------------|
| 1 PARK PLAZA COUNTY HALL LONDON | 6 TATE BRITAIN GALLERY | 11 NATIONAL THEATRE |
| 2 THE HOUSES OF PARLIAMENT & BIG BEN | 7 BUCKINGHAM PALACE | 12 TATE MODERN GALLERY |
| 3 THE LONDON EYE | 8 NATIONAL GALLERY | |
| 4 LONDON AQUARIUM | 9 REGENT STREET | |
| 5 WESTMINSTER ABBEY | 10 SOUTHBANK CENTRE | |

ROOM NAME	DIMENSION W X L X H(M)	THEATRE ROOM		BOARD ROOM	U-SHAPE ROOM	CLASS ROOM	CABARET DINNER	DINNER DANCE	RECEPTION
CONFERENCE LEVEL 1									
PUTNEY	5.6 x 5.0 x -	20	12	14	18	16	20	-	20
WESTMINSTER	5.6 x 7.3 x -	35	18	18	24	24	40	-	35
PUTNEY AND WESTMINSTER	5.6 x 12.3 x -	70	30	27	48	48	55	-	80
MILLENNIUM	7.0 x 7.3 x -	50	18	18	24	32	40	-	50
BATTERSEA	7.0 x 5.0 x -	30	16	14	18	16	20	-	30
MILLENNIUM AND BATTERSEA	7.0 x 12.3 x -	100	40	36	60	64	80	-	100
CONFERENCE LEVEL 2									
VAUXHALL	5.6 x 7.3 x -	35	18	18	24	24	40	-	35
LAMBETH	5.6 x 5.0 x -	20	12	14	18	16	20	-	20
VAUXHALL AND LAMBETH	5.6 x 12.3 x -	70	30	27	48	48	55	-	80

CONFERENCE LEVEL 1



CONFERENCE LEVEL 2



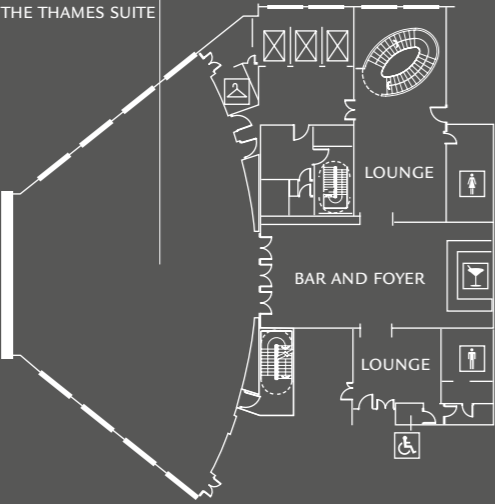
Restrooms

Lift

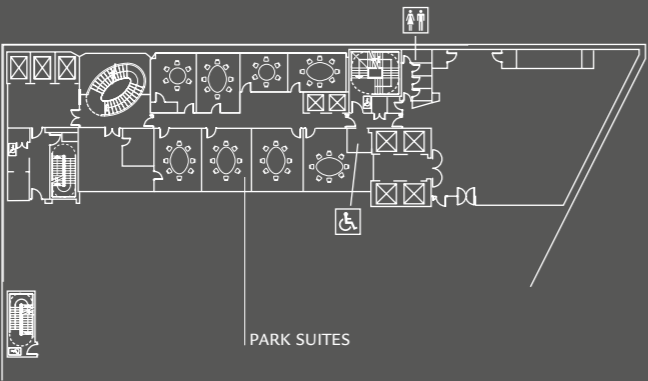




CONFERENCE LEVEL 1

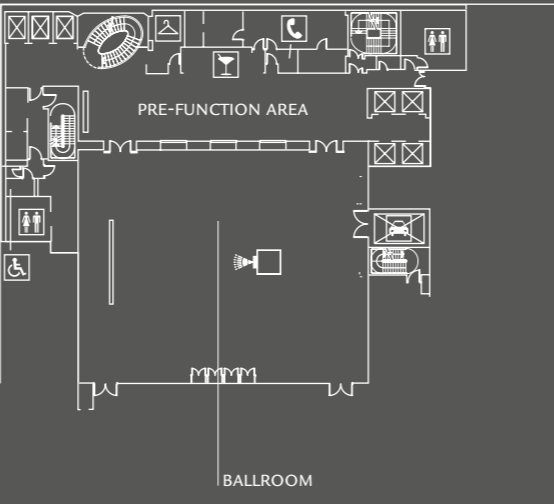


MEZZANINE LEVEL

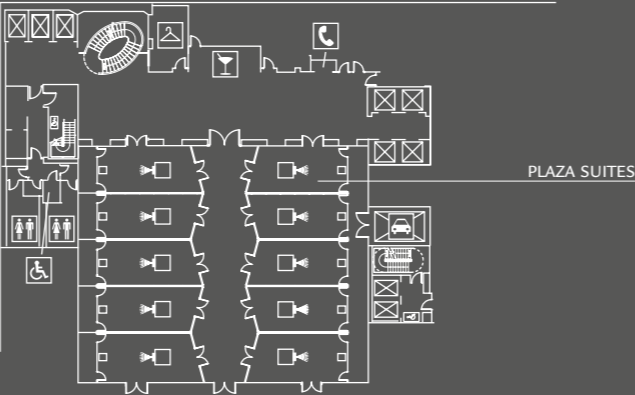


- Male WC
- Female WC
- Accessible WC
- Cloakroom
- Bar
- Telephone
- Projector available on request
- Service Lift
- Lift

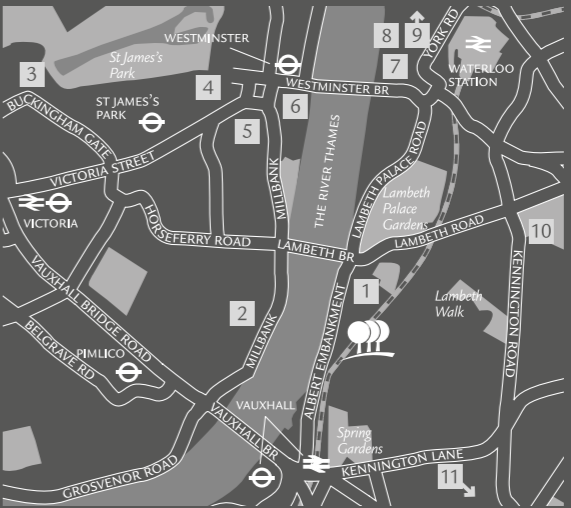
CONFERENCE LEVEL -2



CONFERENCE LEVEL -4



ROOM NAME	DIMENSION W X L X H (M)	THEATRE	BOARD ROOM	U-SHAPE ROOM	CLASS ROOM	CABARET DINNER	DINNER DANCE	RECEPTION
CONFERENCE LEVEL 1								
THE THAMES SUITE	3 to 15 x 3	310	-	-	150	160	300	400
CONFERENCE LEVEL -2								
THE BALLROOM	22.9 x 27.9 x 5	650	-	-	450	432	540	660
The ballroom can also be divided into two separate ballrooms								
BALLROOMS	22.9 x 13.9 x 5	300	-	54	216	200	250	450
CONFERENCE LEVEL -4								
THE PLAZA SUITE	24.5 x 22.8 x 2.3	550	-	-	330	304	400	550
The plaza suite can also be split into variable syndicate rooms								
SINGLE PLAZA ROOM	9.5 x 4.5 x 3.95	40	22	-	24	32	30	40
DOUBLE PLAZA ROOM	9.5 x 9.0 x 3.95	80	32	23	48	56	60	80
TRIPLE PLAZA ROOM	9.5 x 13.5 x 3.95	120	40	30	60	88	90	120
QUADRUPLE PLAZA ROOM	9.5 x 18 x 3.95	160	-	-	72	110	120	160
HALF THE PLAZA SUITE	9.5 x 22.5 x 3.95	200	-	-	84	140	150	200
MEZZANINE LEVEL — PARK SUITES & BUSINESS CENTRE								
PARK SUITE 1	5.8 x 4.3 x 2.3	15	10	-	-	-	10	-
PARK SUITE 2	5.1 x 4.9 x 2.3	20	14	-	-	-	14	-
PARK SUITE 3	5.8 x 4.3 x 2.3	15	10	-	-	-	10	-
PARK SUITE 4	6.0 x 4.8 x 2.3	24	14	-	-	-	14	-
PARK SUITE 5	5.9 x 3.6 x 2.3	18	10	-	-	-	10	-
PARK SUITE 6	4.3 x 3.6 x 2.3	-	10	-	-	-	10	-
PARK SUITE 7	5.4 x 3.9 x 2.3	12	10	-	-	-	10	-
PARK SUITE 8	4.0 x 3.9 x 2.3	10	6	-	-	-	6	-



- 1 PARK PLAZA RIVERBANK LONDON
- 2 TATE BRITAIN
- 3 BUCKINGHAM PALACE
- 4 QUEEN ELIZABETH CONFERENCE CENTRE
- 5 WESTMINSTER ABBEY
- 6 THE HOUSES OF PARLIAMENT & BIG BEN
- 7 LONDON AQUARIUM
- 8 THE LONDON EYE
- 9 ROYAL FESTIVAL HALL
- 10 IMPERIAL WAR MUSEUM
- 11 THE OVAL CRICKET GROUND

PARK PLAZA RIVERBANK LONDON

A STUNNING CONFERCING SOLUTION INCLUDING CUSTOMISABLE SPACE, DEDICATED EVENTS TEAMS AND CUTTING-EDGE TECHNOLOGY.

Effortlessly stylish, Park Plaza Riverbank London is one of the capital's most comprehensive meetings and events venues, with a multitude of flexible meeting rooms. From product launches to major conferences and society weddings, the hotel offers outstanding facilities and world-class service.

- 21 meeting rooms in a self-contained conference centre
- Experienced on-site audio-visual and meeting planners
- Hi-tech audio-visual equipment, rigging points and car lift access
- Exclusive Thames Suite with 180-degree River Thames views
- Ballroom, Plaza and Park Suites with multiple configurations
- Luxury private suites with balconies for private functions
- Dedicated check-in area and drop-off for coaches and cars
- Overlooking Millbank on the south side of the River Thames
- 395 contemporary guestrooms, Executive Rooms and Suites
- Award-winning Chino Latino® Pan-Asian Restaurant & Bar
- Club Lounge for private dining
- Licensed for weddings and civil ceremonies

18 Albert Embankment, London SE1 7TJ
T: +44 (0) 844 854 5290 F: +44 (0) 844 854 5291
pprlconf@pphe.com
parkplaza.com/riverbank

PARK PLAZA SHERLOCK HOLMES LONDON

A QUINTESSENTIALLY ENGLISH SETTING FOR
BESPOKE MEETINGS AND FUNCTIONS FOR
UP TO 80 GUESTS IN THE HEART OF LONDON.

Inspired by Arthur Conan Doyle’s novels, Park Plaza Sherlock Holmes London is a boutique venue on Marylebone’s fashionable Baker Street. Seven function rooms can host a formal meeting, social gathering or Murder Mystery dinner, while drinks parties can be held in the Lounge.

- Seven dedicated meeting rooms, four with natural daylight
- Roaring fires and subtle literary accents in the inviting Lounge
- Located in two 18th-century former residences on Baker Street
- Home-from-home experience with personalised service
- Close to London’s West End, the City and all transport hubs
- 119 tasteful guestrooms, Executive Studios and spectacular Loft Suites
- One AA Rosette Sherlock’s Grill for modern British cuisine
- Sherlock’s Bar for open fires, handpicked wines and speciality cocktails
- Tranquil Aurora Spa with sauna, steam room and gym
- Licensed for weddings and civil ceremonies

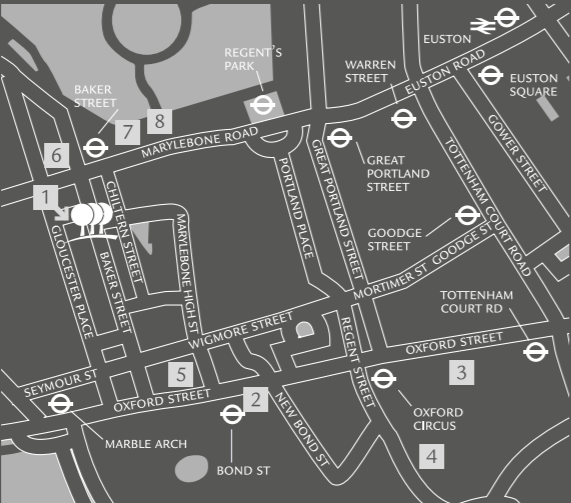


108 Baker Street, London W1U 6LJ

T: +44 (0) 844 415 6760 F: +44 (0) 844 415 6741

ppsh_me@pphe.com

parkplaza.com/sherlockholmes



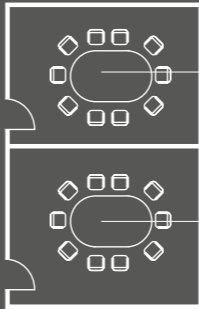
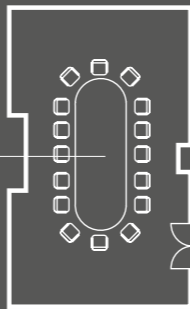
- 1 PARK PLAZA SHERLOCK HOLMES LONDON
- 2 OXFORD STREET
- 3 SOHO
- 4 REGENT STREET
- 5 SELFRIDGES
- 6 SHERLOCK HOLMES MUSEUM
- 7 PLANETARIUM
- 8 MADAME TUSSAUDS

ROOM NAME	DIMENSION W X L X H(M)	THEATRE ROOM		BOARD ROOM	U-SHAPE ROOM	CLASS ROOM	CABARET DINNER	DINNER DANCE	RECEPTION
GROUND FLOOR									
BOARDROOM 1	8.1 x 5.0 x 2.7	40	23	25	30	21	24	-	40
BOARDROOM 2	5.5 x 3.7 x 2.65	20	8	-	-	-	10	-	-
BOARDROOM 3	5.5 x 4.2 x 2.65	20	8	-	-	-	10	-	-
THE STUDY	5.3 x 5.0 x 2.25	20	13	9	12	-	14	-	20
LOWER GROUND FLOOR									
DOYLE 1	4.2 x 7.3 x 2.32	30	19	15	15	16	20	-	30
DOYLE 2	4.5 x 4.5 x 2.32	-	8	-	-	-	-	-	-
DOYLE 3	7.7 x 6.0 x 2.43	70	22	24	30	32	44	-	60



GROUND FLOOR

BOARDROOM 1

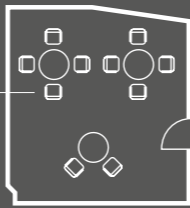


BOARDROOM 2



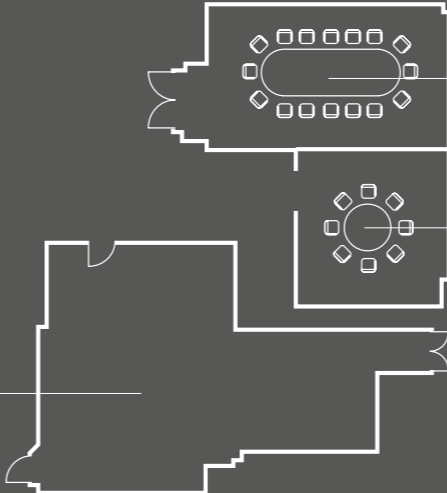
BOARDROOM 3

THE STUDY



LOWER GROUND FLOOR

DOYLE 3



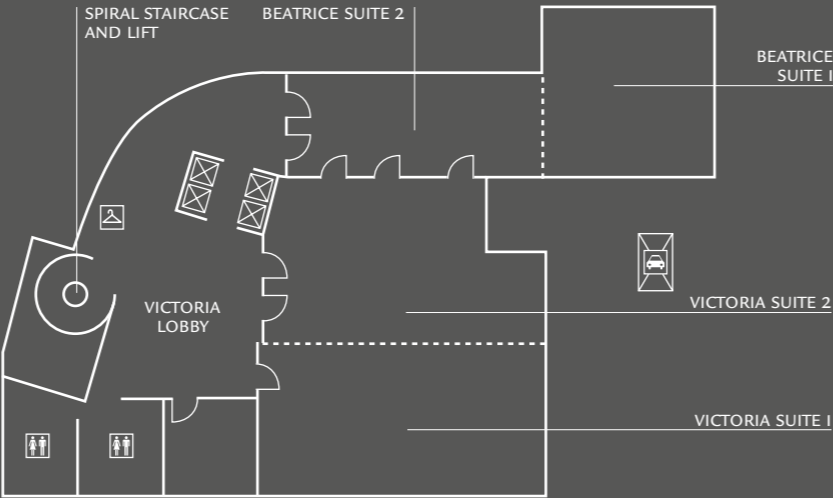
DOYLE 1

DOYLE 2

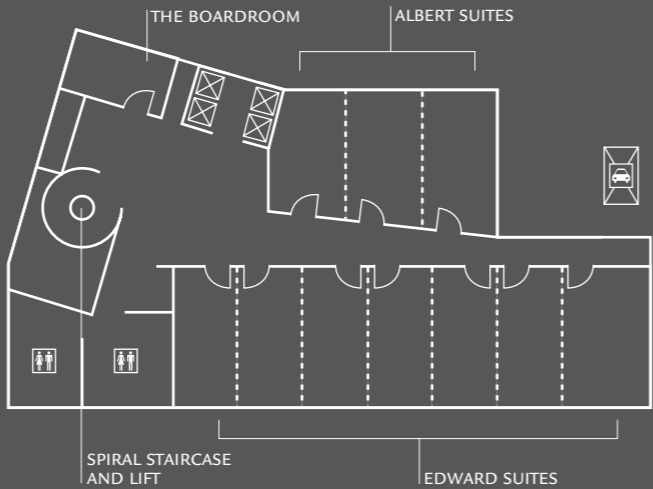




CONFERENCE LEVEL 1

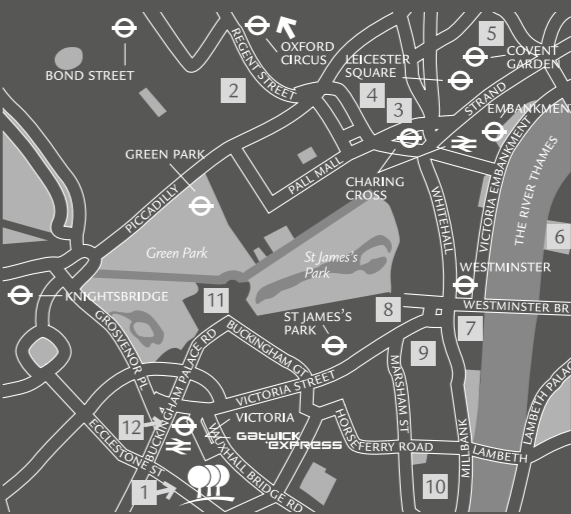


CONFERENCE LEVEL 2



- Restrooms
- Cloakroom
- Service Lift
- Lift

ROOM NAME	DIMENSION W X L X H(M)	THEATRE	BOARD ROOM	U- SHAPE	CLASS ROOM	CABARET DINNER	DINNER DANCE	RECEP- TION
CONFERENCE LEVEL 1								
VICTORIA SUITE	23.8 x 25.5 x 3.5	550	-	-	260	280	400	750
VICTORIA 1	23.8 x 12.9 x 3.5	250	-	50	120	120	210	350
VICTORIA 2	23.8 x 12.6 x 3.5	220	-	50	108	100	180	250
BEATRICE SUITE	-	-	-	-	-	-	220	400
BEATRICE 1	14.9 x 14.1 x 3.6	166	40	41	60	88	120	200
BEATRICE 2	20.9 x 9.3 x 2.4	140	50	-	60	80	110	200
CONFERENCE LEVEL 2								
EDWARD SUITE	10.1 x 38.4 x 3.1	300	-	-	153	-	280	400
EDWARD 1	10.1 x 5.2 x 3.1	45	24	24	24	32	40	45
EDWARD 2	10.1 x 5.2 x 3.1	45	24	24	24	32	40	45
EDWARD 3	10.1 x 5.2 x 3.1	45	24	24	24	32	40	45
EDWARD 4	10.1 x 5.2 x 3.1	45	24	24	24	32	40	45
EDWARD 5	10.1 x 5.2 x 3.1	45	24	24	24	32	40	45
EDWARD 6	10.1 x 5.2 x 3.1	45	24	24	24	32	40	45
EDWARD 7	10.1 x 7.2 x 3.1	60	24	28	30	40	50	65
EDWARD 1 AND 2	10.1 x 10.4 x 3.1	90	36	36	36	56	80	90
EDWARD 3 AND 4	10.1 x 10.4 x 3.1	90	36	36	36	56	80	90
EDWARD 5 AND 6	10.1 x 10.4 x 3.1	90	36	36	36	56	80	90
EDWARD 1-3	10.1 x 15.6 x 3.1	150	50	50	63	96	140	150
EDWARD 1-4	10.1 x 20.8 x 3.1	200	64	64	90	120	160	200
EDWARD 6-7	10.1 x 12.4 x 3.1	120	36	36	45	64	90	120
EDWARD 5-7	10.1 x 17.6 x 3.1	160	50	50	63	104	140	150
EDWARD 4-7	10.1 x 22.8 x 3.1	220	64	64	99	136	180	220
ALBERT SUITE	9.6 x 18.5 x 3.1	140	-	56	60	96	120	150
ALBERT 1	8.9 x 6.3 x 3.1	40	22	16	18	24	30	40
ALBERT 2	9.6 x 6.3 x 3.1	45	22	20	24	32	30	45
ALBERT 3	9.6 x 5.9 x 3.1	45	22	20	24	32	30	450
ALBERT 1 AND 2	9.5 x 12.6 x 3.1	85	28	36	36	56	70	80
ALBERT 2 AND 3	9.5 x 12.2 x 3.1	90	34	36	36	64	80	90
THE EXECUTIVE BOARDROOM	8.0 x 5.5 x 3.0	-	15	-	-	-	-	-



- | | | |
|------------------------------|--------------------------------------|--------------------------|
| 1 PARK PLAZA VICTORIA LONDON | 6 LONDON EYE | 11 BUCKINGHAM PALACE |
| 2 REGENT STREET | 7 THE HOUSES OF PARLIAMENT & BIG BEN | 12 ORIENT EXPRESS TRAINS |
| 3 NATIONAL GALLERY | 8 QUEEN ELIZABETH CONFERENCE CENTRE | |
| 4 LEICESTER SQUARE | 9 WESTMINSTER ABBEY | |
| 5 COVENT GARDEN | 10 TATE BRITAIN GALLERY | |

PARK PLAZA VICTORIA LONDON

DESIGN-LED DÉCOR COMBINES WITH BEST-IN-CLASS TECHNOLOGY, ACCOMMODATION AND DINING TO CREATE AN OUTSTANDING MEETINGS AND CONFERENCING SOLUTION.

From product launches to wedding receptions, Park Plaza Victoria London offers a dedicated conferencing centre with 14 flexible meeting rooms complemented by an extensive exhibition area for trade shows and corporate events, all within easy reach of London's rail and airport links.

- 14 versatile meeting rooms in a self-contained facility
- Breathtaking 600m² Victoria Suite for up to 750 guests
- Soundproofed conference and exhibitions area for 30 stands
- Two ballrooms for large weddings and social gatherings
- Licensed for weddings and civil ceremonies
- Close to Victoria Station and the capital's key transport hubs
- 287 chic guestrooms and 12 luxurious apartments
- TOZI, a vibrant Italian restaurant and cocktail bar specialising in Venetian cicchetti, adjacent to the hotel
- The Lounge Bar for speciality cocktails, bar snacks and coffees
- Fitness suite and beauty treatment rooms



239 Vauxhall Bridge Road, London SW1V 1EQ

T: +44 (0) 844 415 6750 F: +44 (0) 844 415 6751

ppvlconf@pphe.com

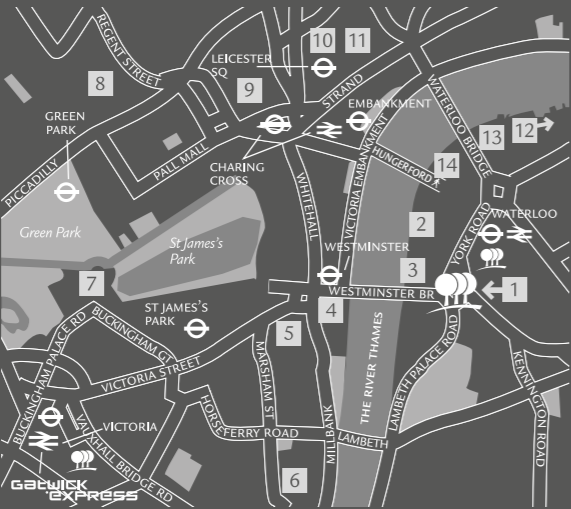
parkplaza.com/victorialondon

PARK PLAZA WESTMINSTER BRIDGE LONDON

ART MEETS DESIGN TO CREATE AN UNPARALLELED MEETINGS AND CONFERENCE SOLUTION ON THE BANKS OF THE ICONIC RIVER THAMES

The spectacular Park Plaza Westminster Bridge London overlooks Big Ben and the Houses of Parliament on London’s South Bank. An all-in-one solution for meetings, conferences and private gatherings, the hotel boasts a 1,200m² pillar-free ballroom, flexible meeting suites and intimate City Boardrooms.

- Breathtaking Westminster Ballroom for 1,400 delegates theatre-style
- Flexible Plaza and Park suites for meetings for up to 250 guests
- Exclusive City Boardrooms with floor-to-ceiling windows
- Dedicated coach parking, group check-in and high-level security
- Licensed for weddings and civil ceremonies
- Minutes from the City of London and the glamorous West End
- 1,019 tasteful guestrooms, suites and Penthouse Apartments
- Block booking available for conference delegates
- Five unique restaurants and bars offering international cuisine
- Mandara Spa and fitness centre with indoor swimming pool



- 1

PARK PLAZA
WESTMINSTER BRIDGE
LONDON
- 2

THE LONDON EYE
- 3

LONDON AQUARIUM
- 4

THE HOUSES OF
PARLIAMENT & BIG BEN
- 5

WESTMINSTER ABBEY
- 6

TATE BRITAIN GALLERY
- 7

BUCKINGHAM PALACE
- 8

REGENT STREET
- 9

NATIONAL GALLERY
- 10

THEATRE LAND
- 11

COVENT GARDEN
- 12

TATE MODERN GALLERY
- 13

NATIONAL THEATRE
- 14

SOUTHBANK CENTRE



200 Westminster Bridge Road, London SE1 7UT

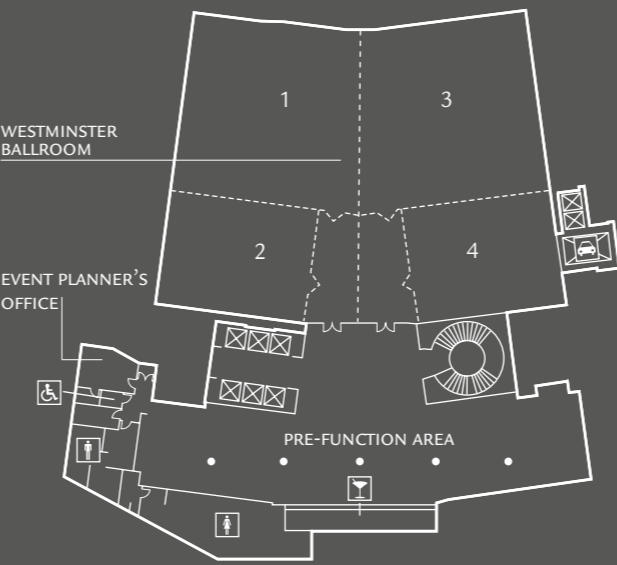
T: +44 (0) 844 415 6790 F: +44 (0) 844 415 6791

ppwlconf@pphe.com

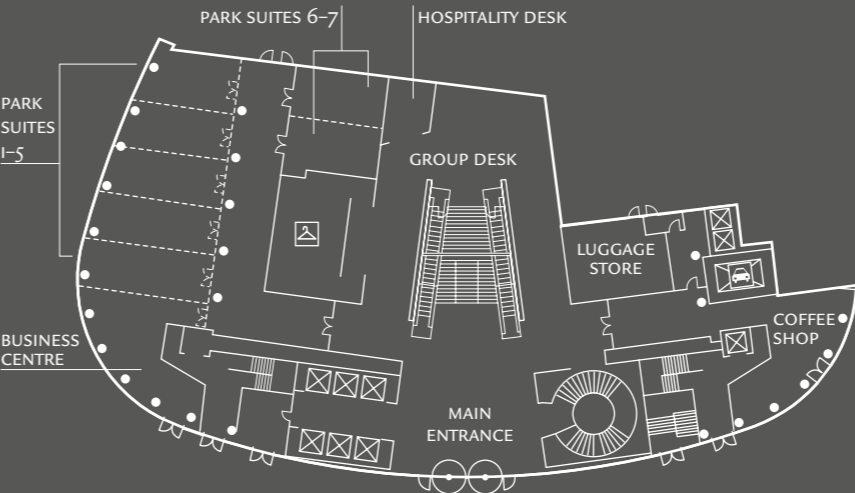
parkplaza.com/westminsterbridge

ROOM NAME	DIMENSION W X L X H(M)	THEATRE	BOARD ROOM	U- SHAPE	CLASS ROOM	CABARET DINNER	DINNER RECEPTION	RECEPTION
WESTMINSTER BALLROOM								
WESTMINSTER BALLROOM	31.2 x 37.4 x 5.3	1400	-	-	700	720	1200	1000
ROOM 1	18.5 x 17.8 x 5.3	350	-	-	170	225	240	160
ROOM 2	12.4 x 14.9 x 5.3	200	-	-	100	144	120	100
ROOM 3	18.5 x 17.8 x 5.3	350	-	-	170	225	240	160
ROOM 4	12.4 x 14.9 x 5.3	200	-	-	100	144	120	100
ROOM 1 + 2	31.2 x 18.7 x 5.3	700	-	-	350	342	580	480
ROOM 1 + 3	36.0 x 18.5 x 5.3	800	-	-	400	405	630	350
ROOM 3 + 4	31.2 x 18.7 x 5.3	700	-	-	350	342	580	480
PRE-FUNCTION AREA	5.3 (H)	-	-	-	-	-	220	-
LOWER GROUND FLOOR								
PLAZA SUITE 1	9.5 x 5.2 x 3.4	55	20	24	24	21	30	-
PLAZA SUITE 2	10.5 x 5.4 x 3.4	62	24	26	27	24	30	-
PLAZA SUITE 3	10.8 x 5.3 x 3.4	70	26	26	30	24	30	-
PLAZA SUITE 4	7.5 x 4.9 x 3.4	32	16	18	18	16	20	-
PLAZA SUITE 5	7.5 x 4.9 x 3.4	45	20	18	24	16	20	-
PLAZA SUITE 6	7.5 x 4.8 x 3.4	43	16	18	24	16	20	-
PLAZA SUITE 7	7.5 x 4.8 x 3.4	48	20	20	27	16	20	-
PLAZA SUITE 8	7.5 x 4.8 x 3.4	44	20	18	27	16	20	-
PLAZA SUITE 9	7.5 x 4.8 x 3.4	46	20	20	27	16	20	-
PLAZA SUITE 10	8.8 x 6.2 x 3.4	60	24	22	27	24	30	-
PLAZA SUITE 11	9.5 x 6.1 x 3.4	64	26	24	30	24	30	-
PLAZA SUITE 12	9.5 x 6.1 x 3.4	64	26	24	30	24	30	-
PLAZA SUITE 13	9.5 x 6.1 x 3.4	70	26	24	30	24	30	-
PLAZA SUITE 1-3	16.1 x 10.2 x 3.4	150	40	40	90	90	180	-
PLAZA SUITE 4-9	30.0 x 7.5 x 3.4	200	-	-	108	126	150	120
PLAZA SUITE 10-13	24.5 x 9.5 x 3.4	250	40	-	98	135	150	100
PLAZA SUITE (WHOLE SUITE)	113.0 x 4.8 x 3.4	-	-	-	-	-	-	1000
PLAZA SUITE FOYER	3.4 (H)	-	-	-	-	-	-	200
GROUND FLOOR								
PARK SUITE 1	5.4 x 4.6 x 3.2	20	10	9	12	-	10	-
PARK SUITE 2	6.5 x 3.8 x 3.2	30	14	11	15	-	10	-
PARK SUITE 3	7.6 x 3.8 x 3.2	34	16	13	18	16	20	-
PARK SUITE 4	8.5 x 3.8 x 3.2	40	16	15	24	16	20	-
PARK SUITE 5	8.8 x 3.9 x 3.2	40	16	15	24	16	20	-
PARK SUITE 6	6.8 x 4.3 x 2.8	30	16	13	18	16	20	-
PARK SUITE 7	6.8 x 4.0 x 2.8	30	16	13	18	16	20	-
PARK SUITE 1-5	20.5 x 7.6 x 3.2	170	40	44	74	80	120	-
PARK SUITE 6+7	6.8 x 8.4 x 2.8	70	24	21	36	24	30	-
PARK SUITE FOYER	23.6 x 5.0 x 3.2	-	-	-	-	-	-	-
FLOORS 2-12								
CITY ROOMS 2-12	9.2 x 3.1 x 2.3	26	16	-	-	-	-	-

WESTMINSTER BALLROOM

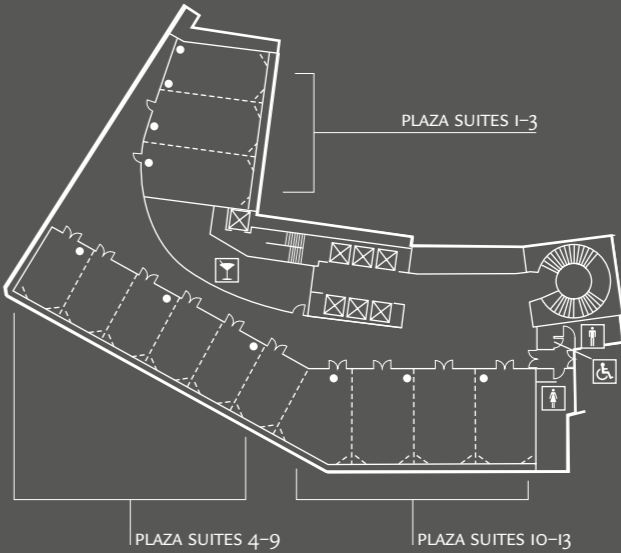


GROUND FLOOR

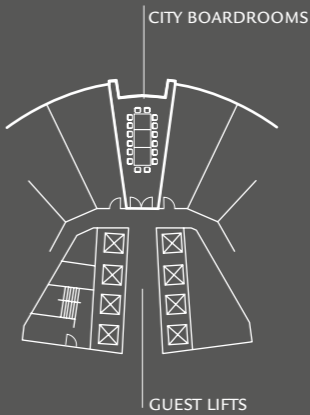


- Male WC
- Female WC
- Accessible WC
- Cloakroom
- Bar
- Lift
- Service Lift

LOWER GROUND FLOOR

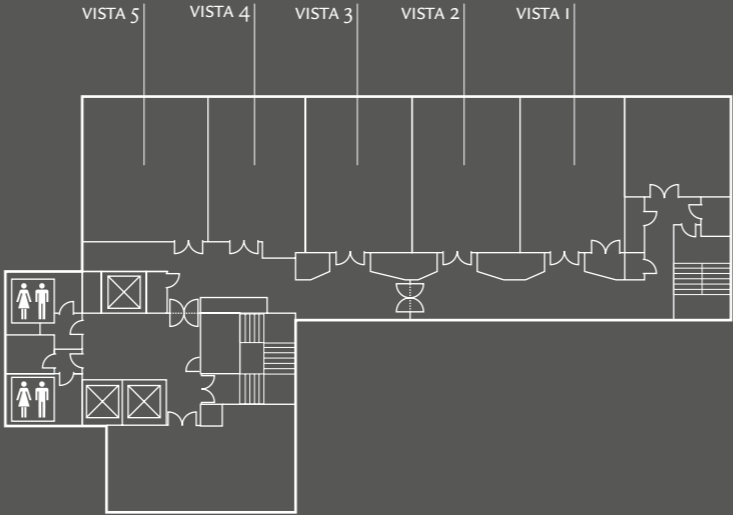


FLOORS 2-12

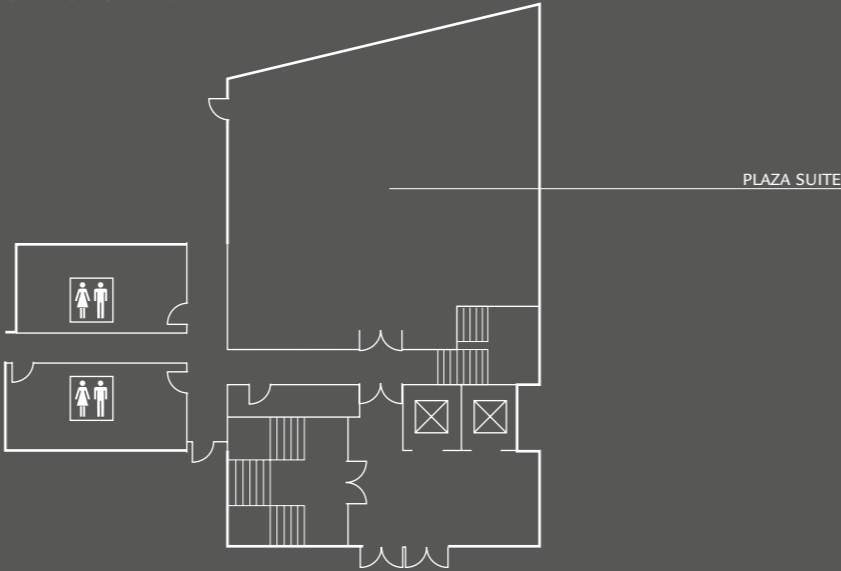




ELEVENTH FLOOR



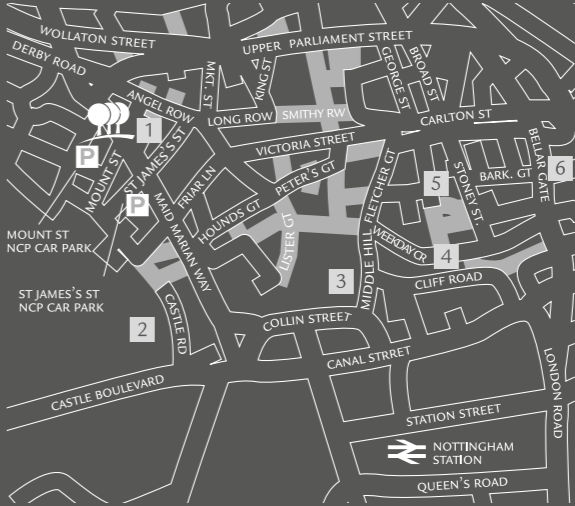
UPPER GROUND FLOOR



Restrooms

Lift

ROOM NAME	DIMENSION W X L X H(M)	THEATRE	BOARD ROOM	U-SHAPE ROOM	CLASS ROOM	CABA- RET	DINNER DANCE	DINNER DANCE	RECEP- TION
ELEVENTH FLOOR									
VISTA 1	9.0 x 6.0 x 2.2	45	16	24	24	24	30	-	50
VISTA 2	9.0 x 6.0 x 2.2	45	16	24	24	24	30	-	50
VISTA 3	9.0 x 6.0 x 2.2	45	16	24	24	24	30	-	50
VISTA 4	9.0 x 5.0 x 2.2	45	16	22	20	24	30	-	50
VISTA 5	9.0 x 7.0 x 2.2	50	16	24	24	24	40	-	60
VISTA 1 AND 2	9.0 x 12.0 x 2.2	100	30	42	45	48	70	70	100
VISTA 3 AND 4	9.0 x 11.0 x 2.2	90	30	40	36	48	70	70	100
VISTA 1, 2 AND 3	9.0 x 18.0 x 2.2	135	-	54	63	72	110	110	170
VISTA 1-4	9.0 x 23.0 x 2.2	185	-	-	90	108	170	170	200
UPPER GROUND FLOOR									
PLAZA SUITE	13.0 x 10.0 x 2.2	60	24	30	45	56	60	60	60
SYNDICATE BEDROOMS	-	-	-	10	-	-	-	-	-



- 1 PARK PLAZA NOTTINGHAM
- 2 NOTTINGHAM CASTLE
- 3 THE CAVES OF NOTTINGHAM
- 4 THE GALLERIES OF JUSTICE
- 5 THE LACE MARKET
- 6 CAPITAL FM ARENA

PARK PLAZA NOTTINGHAM

A VERSATILE MEETINGS AND EVENTS VENUE FOR UP TO 220 GUESTS CLOSE TO NOTTINGHAM'S VIBRANT CITY CENTRE AND KEY COMMERCIAL DISTRICTS

Close to the UK's major motorways and East Midlands Airport, Park Plaza Nottingham is ideal for meetings, conferences, weddings and social gatherings. With neutral décor, natural daylight and Wi-Fi, all meeting rooms combine to form a conference suite with stunning city views.

- 12 meeting rooms offering up to 400m² of event space
- Five syndicate rooms, four of which can form the Vista Suite
- Licensed for weddings and civil ceremonies
- Convenient for Nottingham's main attractions and Sherwood Forest
- 178 contemporary guestrooms, including Executive Rooms and Junior Suites
- Award-winning Chino Latino® Pan-Asian Restaurant & Bar
- Lobby Light bar for refreshment breaks
- Fitness suite with weight-resistance and cardiovascular equipment



41 Maid Marian Way, Nottingham NG1 6GD

T: +44 (0) 844 415 6730 F: +44 (0) 844 415 6731

ppnconf@pphe.com

parkplaza.com/nottingham

PLAZA ON THE RIVER

LONDON’S LEADING FIVE-STAR ALL-SUITE SOLUTION WITH DISCREET PERSONAL SERVICE AND PANORAMIC CITY AND RIVER VIEWS

Situated opposite Tate Britain, Plaza on the River™ — Club and Residence overlooks the Houses of Parliament, Big Ben and the London Eye. Offering contemporary open-plan studios and suites, this exceptional venue partners with Park Plaza Riverbank London to stage bespoke meetings, conferences and private celebrations.

- Signature 400-capacity Thames Room for weddings and corporate entertaining
- Access to 21 meeting rooms at the adjacent Park Plaza Riverbank London
- Glorious location on the Albert Embankment in the heart of London
- 65 spacious open-plan studios and suites
- All suites have designated lounge, kitchen, bedroom and bathroom
- Pre-arrival grocery stocking and personal shopping service
- Award-winning Chino Latino® Pan-Asian Restaurant & Bar
- Contemporary fitness suite and pampering in-room spa menu



- | | | |
|-------------------------------------|--------------------------------------|----------------------------|
| 1 PLAZA ON THE RIVER | 6 THE HOUSES OF PARLIAMENT & BIG BEN | 11 THE OVAL CRICKET GROUND |
| 2 TATE BRITAIN | 7 LONDON AQUARIUM | |
| 3 BUCKINGHAM PALACE | 8 THE LONDON EYE | |
| 4 QUEEN ELIZABETH CONFERENCE CENTRE | 9 ROYAL FESTIVAL HALL | |
| 5 WESTMINSTER ABBEY | 10 IMPERIAL WAR MUSEUM | |

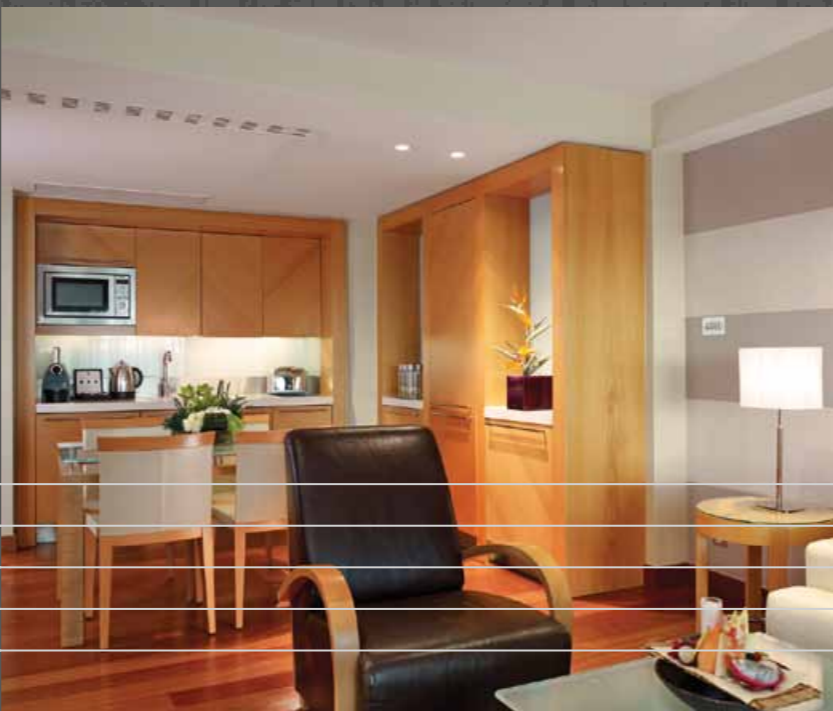


18 Albert Embankment, London SE1 7TJ

T: +44 (0) 207 769 2525 F: +44 (0) 207 769 2524

pprlconf@pphe.com

plazaontheriver.co.uk



- | | |
|------------------------------|--------------------|
| 1 PARK PLAZA ORCHID TEL AVIV | 6 DIZENGOFF CENTRE |
| 2 CITY HALL | 7 HABIMA THEATRE |
| 3 CAMERI THEATRE | 8 OLD JAFFA |
| 4 TOURIST INFORMATION | |
| 5 HISTORICAL MUSEUM | |

PARK PLAZA ORCHID TEL AVIV

A MAGICAL SETTING FOR EXCLUSIVE SOCIAL EVENTS CLOSE TO THE ISRAELI CAPITAL’S COMMERCIAL, FINANCIAL AND CULTURAL DISTRICTS.

Overlooking a beautiful promenade bordering the Mediterranean Sea within walking distance of Jaffa, Park Plaza Orchid Tel Aviv is one of Tel Aviv’s leading hotels. Outstanding accommodation, an indulgent spa and personalised service combine to offer an inspiring backdrop for intimate functions.

- Contemporary Business Lounge for informal meetings
- On-site parking
- Complimentary laptop usage and bicycle service
- Stunning location within walking distance of the old city of Jaffa
- 182 light and airy guestrooms with Wi-Fi and LCD TV
- Luxurious suites with kitchenettes and private balconies
- Breakfast Restaurant offering Mediterranean views from every table
- Relaxing Lobby Bar for cocktails, snacks and dreamy sunsets
- 2,000m² fitness suite, exclusive spa and swimming pool with sundeck



79 Hayarkon Street, Tel Aviv, 63432

T: +972 (0)3 519 7111 F: +972 (0)3 517 4719

orchid@orchidplaza.co.il

parkplaza.com/telaviv

UNDER DEVELOPMENT

PARK PLAZA NUREMBERG

WORK WILL SOON BEGIN ON THE DEVELOPMENT OF THE 177-ROOM PARK PLAZA NUREMBERG, WHICH WILL BE HOUSED IN AN ATTRACTIVE PROTECTED BUILDING WHICH DATES BACK TO THE 1930'S. THE HOTEL WILL ENJOY A PRIME LOCATION OPPOSITE THE CENTRAL STATION IN THE HEART OF NUREMBERG, A CITY ACKNOWLEDGED AS ONE OF EUROPE'S TOP TEN CONFERENCING DESTINATIONS. PARK PLAZA NUREMBERG WILL BOAST 550M² OF CONFERENCE FACILITIES, AS WELL AS A RESTAURANT, BAR, A FITNESS AREA AND SPA FACILITIES.

OUR
FUTURE

CONTACT US

Visit us online, contact the hotel directly or call us toll free. We're looking forward to your call.

sales@pphe.com

GDS Chain Code: PK

Toll Free (00) 800 814 70000*

For a complete overview visit parkplaza.com/contactus

*some phone operators do not grant access to 00800 numbers or may charge a fee

parkplaza.com



GET
IN TOUCH



Connect with us online to benefit from
monthly offers and competitions.

parkplaza.com/stayintouch



parkplaza.com


Park Plaza
Hotels & Resorts