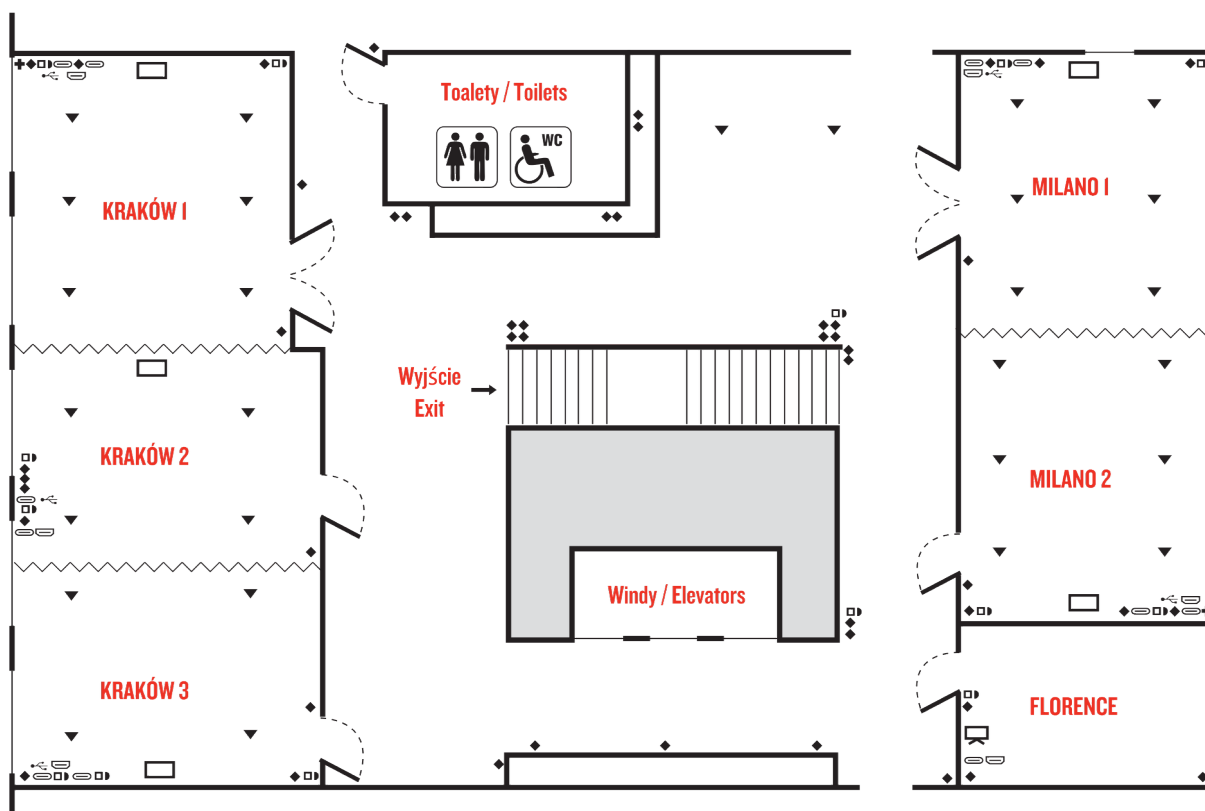


# PLAN TECHNICZNY TECHNICAL PLAN

KRAKÓW

**RED**  
Radisson



## LEGENDA / LEGEND:

- ⊕ Gniazdo siłowe / Power socket
- ⊖ Gniazdko / Electrical outlet
- Ⓜ Gniazdo HDMI / HDMI socket
- Ⓞ Gniazdo USB-C / USB-C socket
- Ⓜ Gniazdo USB / USB socket
- Ⓜ Gniazdo sieciowe / Network outlet
- ▼ FLOORBOX
- Ⓜ Ekran / Screen
- Ⓜ TV

SALE KONFERENCYJNE / CONFERENCE ROOMS	m <sup>2</sup>	WYMIARY / DIMENSIONS (m)	U SHAPE	KONFERENCYJNE / BOARDROOM	TEATRALNE / THEATER	BANKIETOWE / BANQUET	KLASOWE / CLASSROOM	KOKTAJLOWE / COCKTAIL	KABARET / CABARET
Foyer	166								
Krakow 1 & 2 & 3	133	19,25x6,91x3	50	46	150	96	60	140	60
Krakow 1 & 2	93	13,46x6,91x3	34	28	95	64	36	80	40
Krakow 2 & 3	83	12,00x6,91x3	30	24	100	56	36	80	35
Krakow 1	50	7,23x6,91x3	18	14	54	32	12	45	15
Krakow 2	43	6,22x6,91x3	18	14	59	32	18	40	15
Krakow 3	40	5,79x6,91x3	8	10	45	24	12	30	10
Milano 1 & 2	92	14,46x6,36x3	36	32	120	54	42	100	35
Milano 1	45	7,07x6,36x3	20	16	53	32	18	40	20
Milano 2	47	7,39x6,36x3	20	16	59	32	18	40	20
Florence	23	3,61x6,36x3		10					